

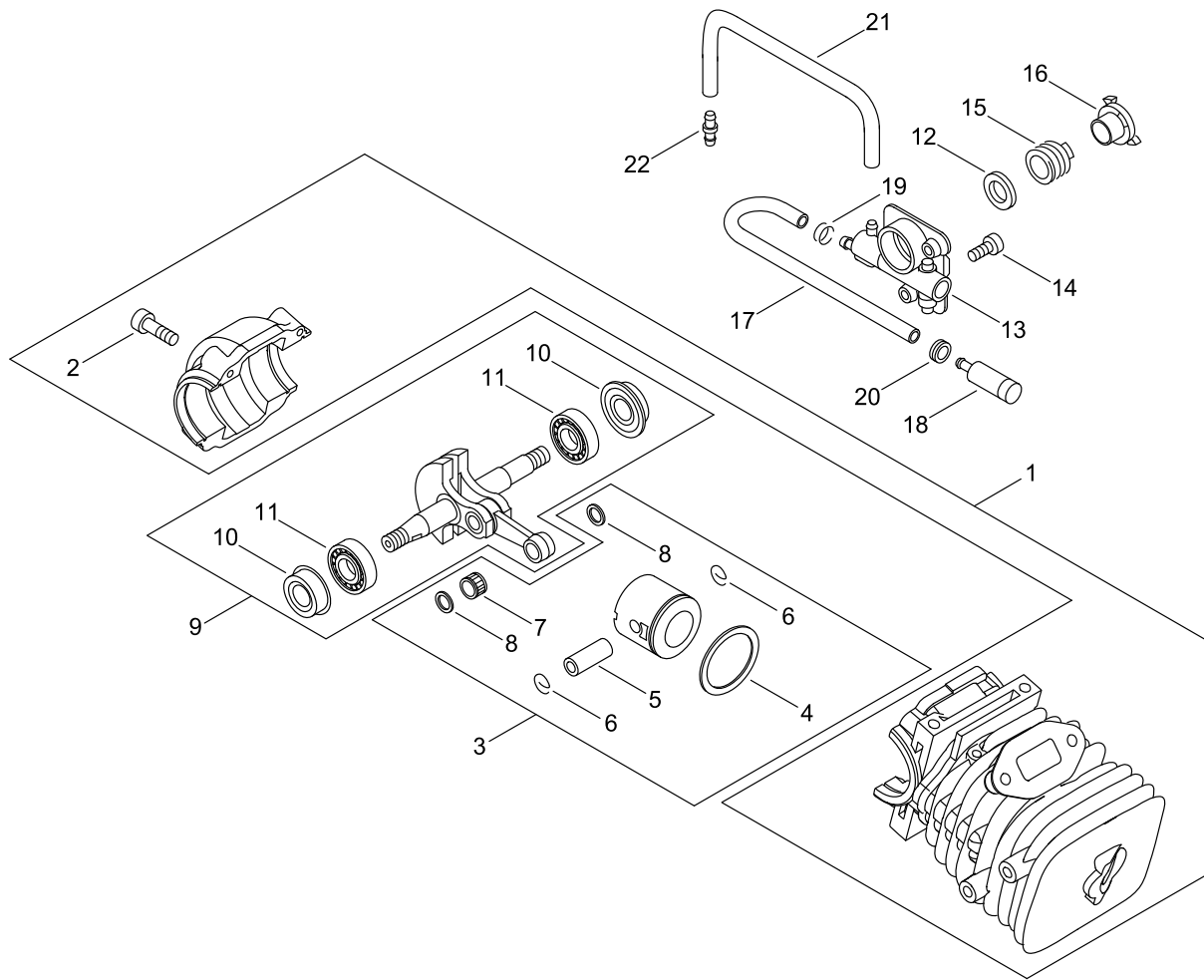
CS-362TES

Published:06/25/2019

TABLE OF CONTENTS

CYLINDER, PISTON, CRANKSHAFT.....	1
ENGINE COVER.....	3
MAGNETO.....	5
AIR CLEANER, CARBURETOR.....	7
CARBURETOR.....	9
MUFFLER.....	11
RECOIL STARTER.....	13
HANDLE.....	15
CHAIN BRAKE.....	17
ACCESSORIES.....	19
OILER.....	21
GUIDE BAR, CHAIN.....	23

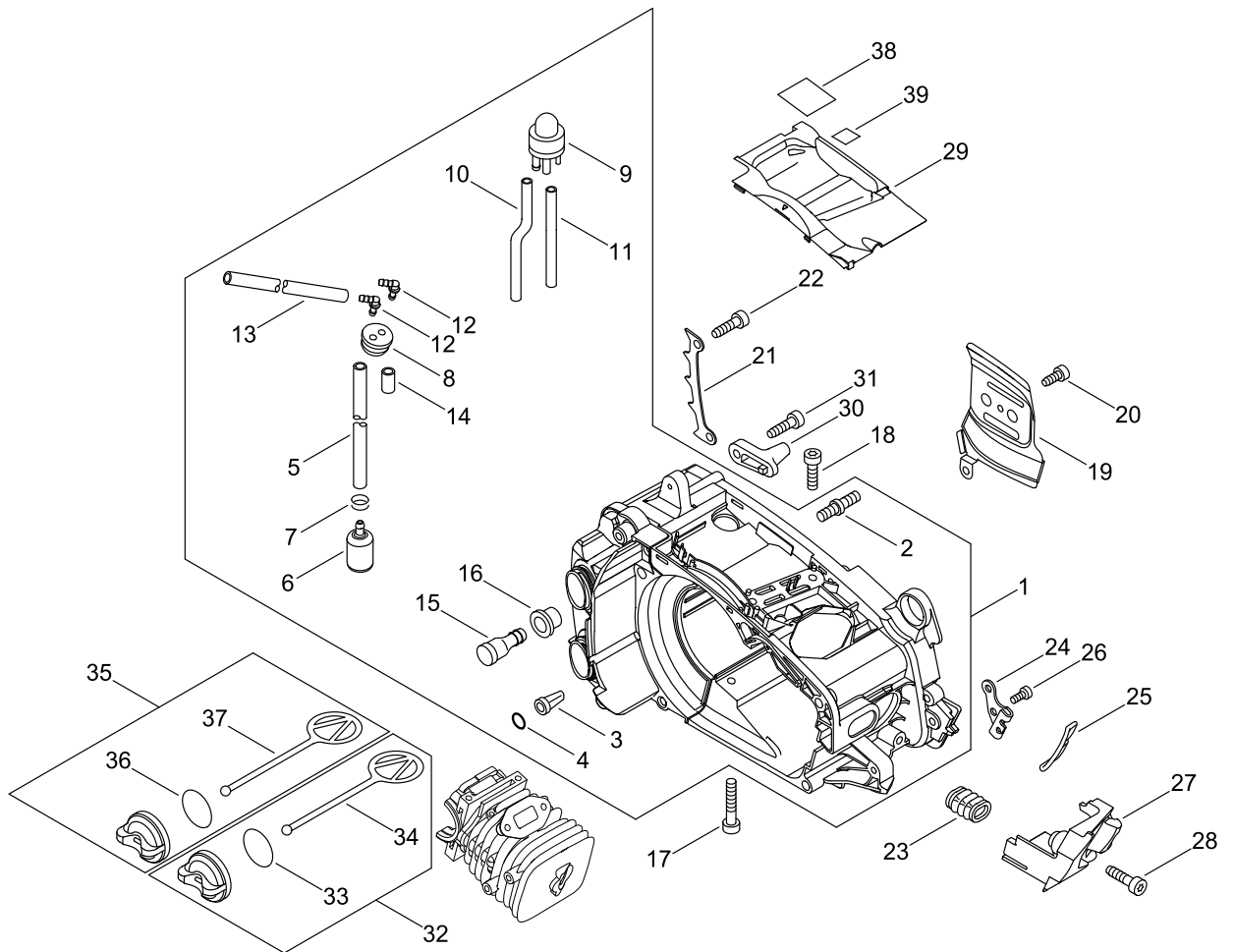
CYLINDER, PISTON, CRANKSHAFT



CYLINDER, PISTON, CRANKSHAFT

KEY NO	LV(+)	Part No	Description	Qty	Standard	Comment
1		P100-007010	CRANKCASE SET	1		
2	+	V805-000210	BOLT, TORX 5	4	TB-5*20 12.9	
3		P021-045440	PISTON KIT	1		
4	+	A101-000670	RING, PISTON	1	39*1.2*1.7	
5	+	100013-15330	PIN, PISTON	1	5.5*8*29	
6	+	100015-04630	CIRCLIP, PISTON PIN	2		
7	+	V553-000130	BEARING, NEEDLE 8	1		
8	+	100014-60930	SPACER, PISTON PIN	2		
9		P021-039160	CRANKSHAFT ASY	1		
10	+	V505-000011	SEAL, OIL 12	2	12*32*5.5	
11	+	94035-36201	BEARING, BALL	2	6201	
12		V308-000030	WASHER, CIRCULAR 11	1	10.5*17.4*1.8	
13		C022-000020	AUTO-OILER ASSEMBLY	1	OP-7	
14		V804-000050	BOLT, TORX 4	2	TB-4*12 10.9	
15		V652-000030	GEAR, WORM	1		
16		V356-000290	COLLAR, 10	1		
17		V471-000741	PIPE	1	3*6*160	
18		P100-001900	STRAINER, OIL	1		
19		V490-001230	CLIP	1		
20		132115-01462	GROMMET	1		
21		132012-11961	PIPE	1	3*6*45	
22		V187-000010	NIPPLE	1		

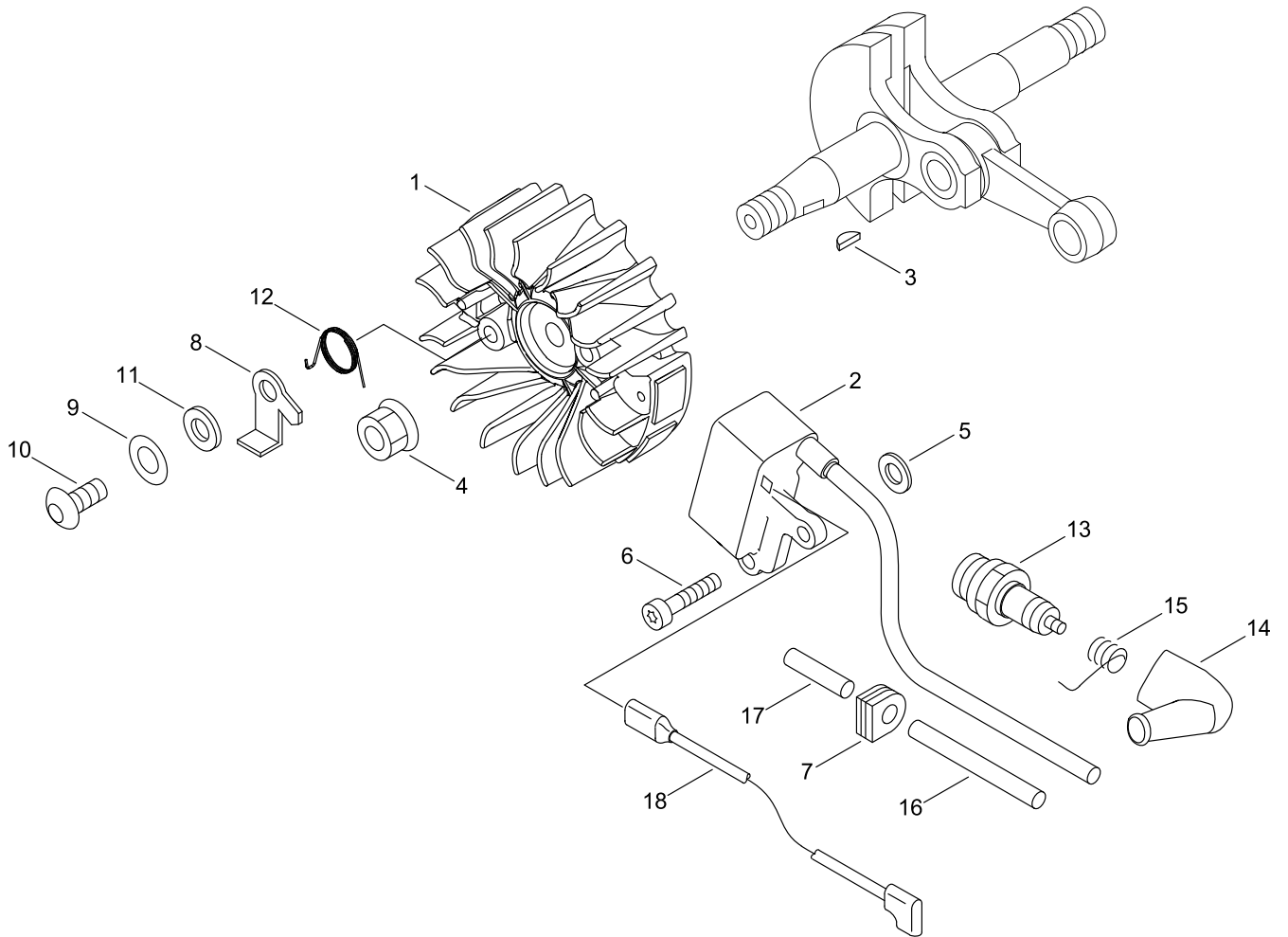
ENGINE COVER



ENGINE COVER

KEY NO	LV(+)	Part No	Description	Qty	Standard	Comment
1		P100-007020	COVER ENGINE ASY	1		
2	+	V225-000262	BOLT,STUD 8	2		
3	+	436114-13930	VALVE, CHECK	1		
4	+	900724-00004	O-RING (S-4)	1	S-4	
5	+	V471-002291	PIPE	1	3*5*140	
6	+	A369-000420	STRAINER, FUEL	1	ES-16499	
7	+	V490-001240	CLIP	1		
8	+	132115-44331	GROMMET, FUEL	1		
9	+	123181-39130	PUMP, PRIMER	1		
10	+	V471-003401	PIPE	1	2.4*5*180	
11	+	V471-003381	PIPE	1	2.4*5*400	
12	+	V186-000530	JOINT,PIPE	2		
13	+	V471-003411	PIPE	1	3*5*265	
14	+	V471-003391	PIPE	1	2.4*5*15	
15	+	131300-56431	VENT ASSEMBLY, FUEL	1		
16	+	V137-000001	GROMMET,FUEL	1		
17		V805-000180	BOLT, TORX 5	2	TB-5*30 12.9	
18		V805-000210	BOLT, TORX 5	2	TB-5*20 12.9	
19		C305-000430	PLATE,SPROCKET GUARD	1		
20		V804-000000	BOLT, TORX 4	1	TT-4*12 DG 10.9	
21		C304-000000	SPIKE	1		
22		V805-000010	BOLT, TORX 5	1	TT-5*20 DG 10.9	
23		A239-000000	PIPE,INTAKE	1		
24		C626-000070	FIXTURE, HARNESS	1		
25		C646-000100	RING, HARNESS	1		
26		V805-000140	BOLT, TORX 5	1	TB-5*12 10.9	
27		A429-000160	COVER,CAP	1		
28		V805-000010	BOLT, TORX 5	1	TT-5*20 DG 10.9	
29		A127-000371	COVER,DUST	1		
30		433026-35430	CATCHER, CHAIN	1		
31		V805-000010	BOLT, TORX 5	1	TT-5*20 DG 10.9	
32		P021-005581	OIL CAP ASY	1		
33	+	900720-00018	O-RING 18	1	P-18	
34	+	A365-000050	CONNECTOR,CAP	1		
35		P021-005591	CAP ASY	1		
36	+	900720-00018	O-RING 18	1	P-18	
37	+	A365-000050	CONNECTOR,CAP	1		
38		X505-002441	LABEL,CAUTION	1		
39		X505-000181	LABEL,CAUTION	1		

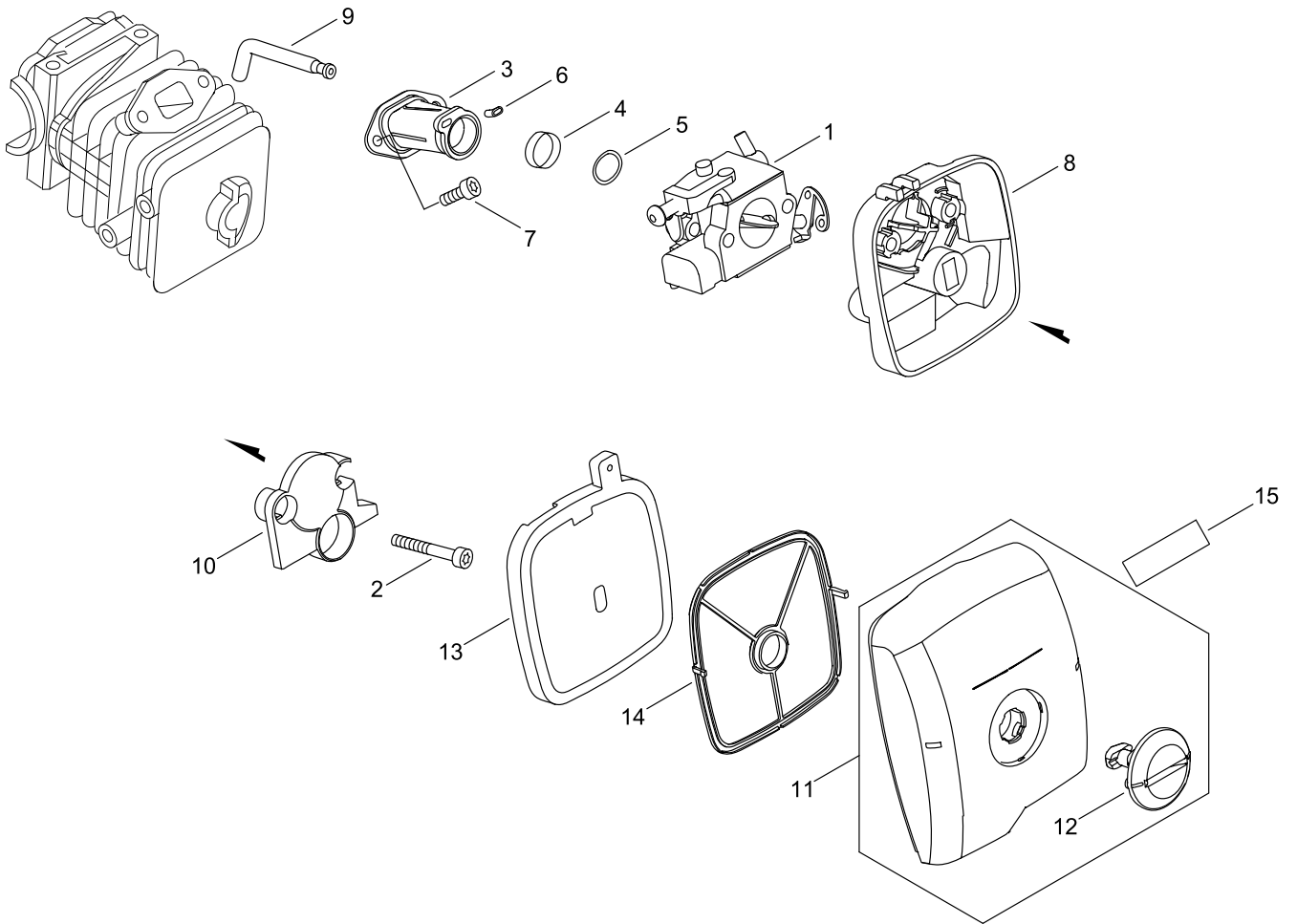
MAGNETO



MAGNETO

KEY NO	LV(+)	Part No	Description	Qty	Standard	Comment
1		A409-001240	ROTOR, MAGNETO	1		
2		A411-001501	COIL, IGNITION	1	OPPAMA ID#A10051	
3		100142-12330	KEY, WOODRUFF	1		
4		900515-00008	NUT, FLANGE 8	1	8	
5		150117-16430	SPACER	2		
6		V805-000210	BOLT, TORX 5	2	TB-5*20 12.9	
7		156110-04920	BUSHING	1		
8		A514-000270	PAWL	2		
9		900603-00005	WASHER 5	2	5.5*12*0.8	
10		V203-000080	BOLT,5	2	5*14	
11		177247-04630	SPACER, RATCHET	2	5.2*8*2.1	
12		177234-35430	SPRING, RETURN	2		
13		A425-000000	SPARKPLUG	1	BPMR8Y	
14		A427-000013	CAP,SPARK PLUG	1		
15		A426-000010	TERMINAL,SPARKPLUG	1		
16		V475-002390	TUBE	1		
17		V475-001900	TUBE	1	7*8.6*30	
18		V485-002430	LEAD	1		

AIR CLEANER, CARBURETOR



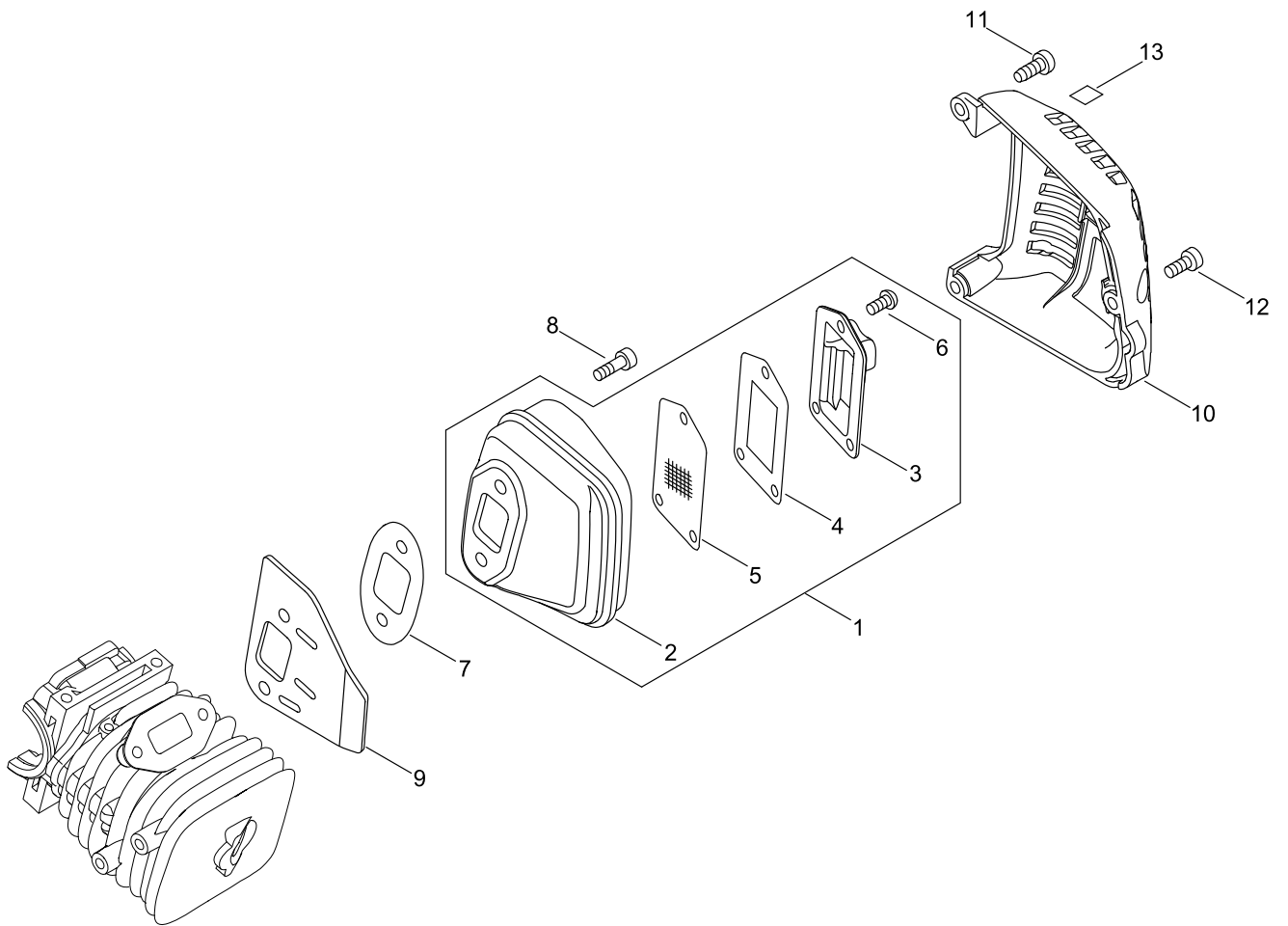
AIR CLEANER, CARBURETOR

KEY NO	LV(+)	Part No	Description	Qty	Standard	Comment
1		A021-004210	CARBURETOR, DIAPHRAGM	1	ZAMA	
2		V805-000080	BOLT, TORX 5	2	TB-5*50 10.9	
3		A202-000231	BELLOWS, INTAKE	1		
4		V451-001411	SPRING,TENSION	1		
5		V311-000170	WASHER,CIRCULAR 16-1	1	T1.2	
6		V351-000000	COLLAR,3	1	3.2*6.5	
7		V805-000140	BOLT, TORX 5	2	TB-5*12 10.9	
8		A225-000611	CASE,CLEANER	1		
9		V470-001910	PIPE	1		
10		A244-000280	PLATE, PREVENT	1		
11		P100-002760	CLEANER COVER ASY	1		
12	+	A235-000361	KNOB,CLEANER LID	1		
13		A226-001820	ELEMENT, AIR FILTER	1		
14		A228-000030	SEAL,CLEANER	1		
15		X503-015190	LABEL,MODEL	1	CS-362TES EU	

CARBURETOR

KEY NO	LV(+)	Part No	Description	Qty	Standard	Comment
1		A021-004210	CARBURETOR, DIAPHRAGM	1	ZAMA	
2	+	P005-003130	NOZZLE, CHECK VALVE	1		
3	+	P005-003140	SHAFT ASY, THROTTLE	1		
4	+	P005-003150	LEVER, THROTTLE	1		
5	+	125348-13930	SCREW	1		
6	+	P005-000790	SPRING, THRT. RETURN	1		
7	+	P005-003160	VALVE, THROTTLE	1		
8	+	P005-003170	SCREW	1		
9	+	125327-13930	CLIP	1		
10	+	P005-001110	DIAPHRAGM, PUMP	1		
11	+	125325-08360	GASKET, PUMP	1		
12	+	P005-003180	COVER, PUMP	1		
13	+	125344-08560	SCREW	1		
14	+	125333-33330	SPRING, IDLE ADJUST	1		
15	+	125378-13930	PIECE, FRICTION	1		
16	+	125310-13930	SCREW	1		
17	+	125337-08260	VALVE, INLET NEEDLE	1		
18	+	125322-13930	SPRING, COIL	1		
19	+	125323-08260	ARM, VALVE	1		
20	+	125338-13930	PIN, METERING ARM	1		
21	+	125339-13930	SCREW	1		
22	+	P005-003190	DIAPHRAGM ,METERING	1		
23	+	P005-003200	GASKET, METERING	1		
24	+	P005-003210	COVER, METERING	1		
25	+	P005-003220	SCREW	4		
26	+	P005-002370	NEEDLE, HIGH SPEED	1		
27	+	P005-002380	NEEDLE, IDLE	1		
28	+	P005-002390	SHAFT, CHOKE	1		
29	+	P005-003230	LEVER, CHOKE	1		
30	+	P005-003240	VALVE, CHOKE	1		
31	+	P005-000880	SPRING, CHOKE RETURN	1		
32	+	125327-15130	CLIP	1		
33	+	P005-000860	SCREEN, FUEL INLET	1		
34	+	P005-002400	PLUG, WELCH	1		
35	+	125314-51230	SCREW	1	3*4.5	

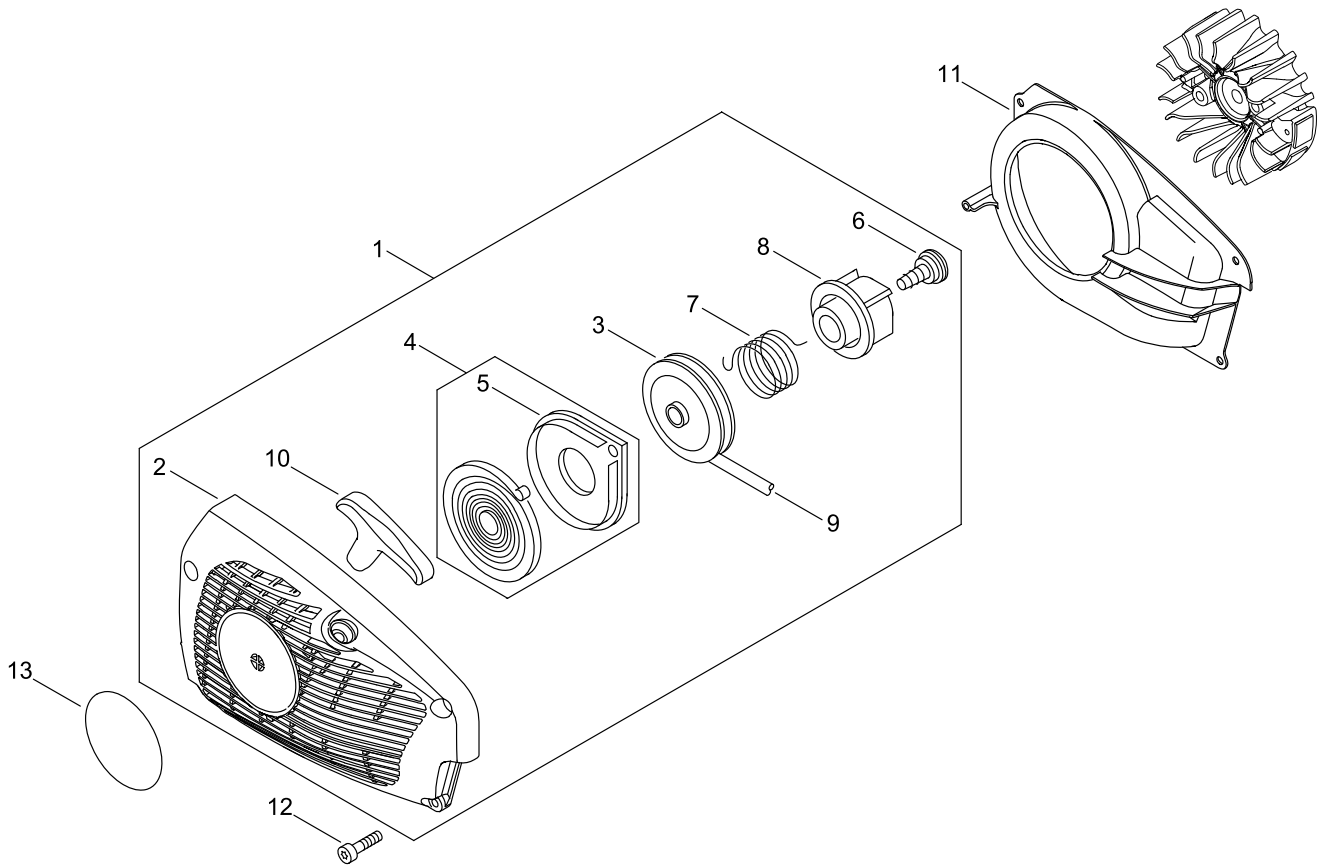
MUFFLER



MUFFLER

KEY NO	LV(+)	Part No	Description	Qty	Standard	Comment
1		P021-045451	MUFFLER ASY	1		
2	+	A300-001841	MUFFLER, EXHAUST	1	T:0.6	
3	+	A313-001980	GUIDE, EXHAUST	1	ID#2140	
4	+	V104-001980	GASKET,EXHAUST	1		
5	+	A310-000431	SCREEN, ARRESTOR	1		
6	+	900242-04010	SCREW 4*10	3	4*10	
7		V104-001960	GASKET,EXHAUST	1		
8		V805-000250	BOLT, TORX 5	2	TB-5*16 12.9	
9		A312-000070	PLATE, EXHUST	1		
10		A320-001080	COVER,MUFFLER	1	FOR CAT MUFF	
11		V805-000010	BOLT, TORX 5	2	TT-5*20 DG 10.9	
12		V805-000150	BOLT, TORX 5	1	TB-5*16 10.9	
13		X505-007710	LABEL,CAUTION	1		

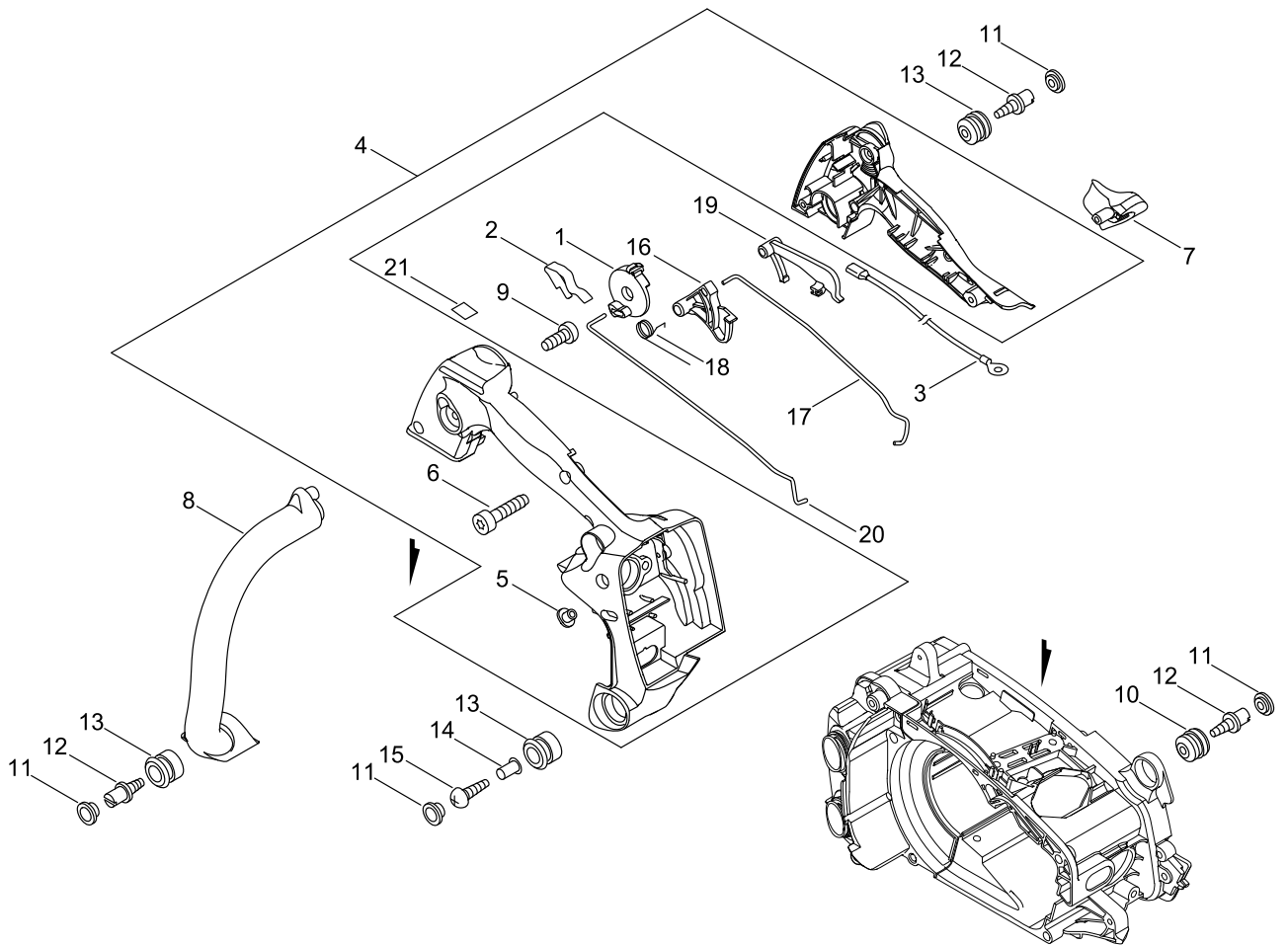
RECOIL STARTER



RECOIL STARTER

KEY NO	LV(+)	Part No	Description	Qty	Standard	Comment
1		A051-002511	STARTER,RECOIL ASY	1		
2	+	P022-042410	CASE,STARTER	1		
3	+	P022-036660	DRUM, STARTER	1		
4	+	P022-001330	SPRING KIT, REWIND	1		
5	++	P022-033280	SPRING CASE	1		
6	+	177236-61830	SCREW	1		
7	+	P022-036670	SPRING,DAMPER	1		
8	+	P022-036680	PLATE, CAM	1		
9	+	P022-008440	ROPE, STARTER	1	3.5*900	
10	+	P022-005891	GRIP, STARTER	1		
11		A172-002091	COVER,FAN	1		
12		V804-000060	BOLT, TORX 4	4	TB-4*16 10.9	
13		X502-000780	LABEL,ECHO	1		

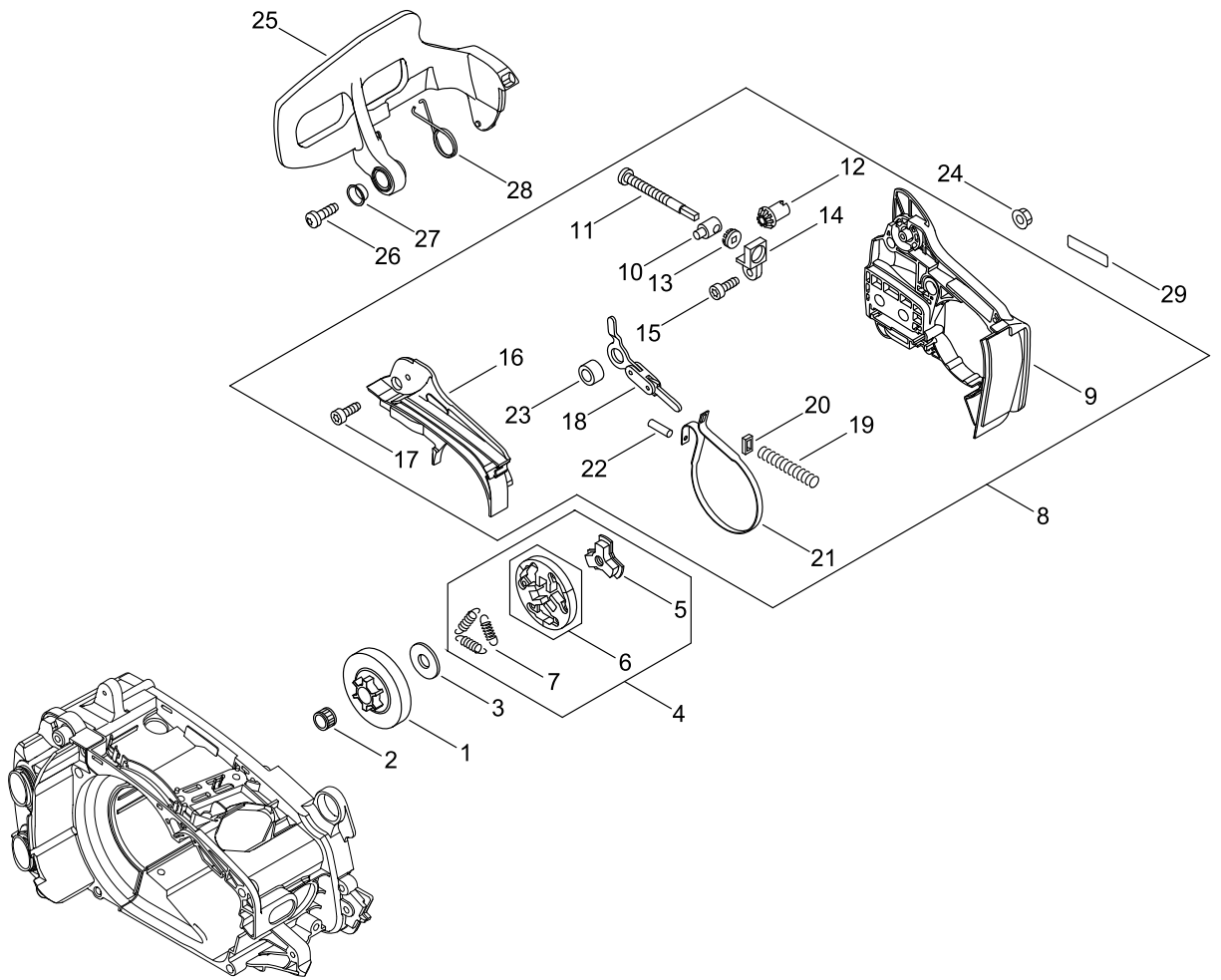
HANDLE



HANDLE

KEY NO	LV(+)	Part No	Description	Qty	Standard	Comment
1		A253-000090	LEVER, CONTROL	1		
2		V486-000371	TERMINAL, LEAD	1		
3		V485-002441	LEAD	1		
4		P021-041820	HANDLE SET, REAR	1		
5	+	130020-33330	NUT	2		
6	+	V804-000010	BOLT, TORX 4	4	TT-4*16 DG 10.9	
7		C401-000320	PIECE, HANDLE	1		
8		C400-001150	HANDLE, FRONT	1		
9		V805-000010	BOLT, TORX 5	1	TT-5*20 DG 10.9	
10		100910-18830	CUSHION	1		
11		100918-15130	CAP	4		
12		V202-000000	BOLT, 4	3		
13		V400-000070	CUSHION, 4	3		
14		V352-000020	COLLAR, 4	1		
15		91481-04035	SCREW TAPPING	1		
16		C450-000731	CONTROL, THROTTLE	1		
17		C454-000491	ROD, THROTTLE	1		
18		V452-000010	SPRING, TORSION	1		
19		C460-000002	LOCKOUT, THROTTLE	1		
20		A240-000200	ROD, CHOKE	1		
21		890157-39131	LABEL, SWITCH	1		

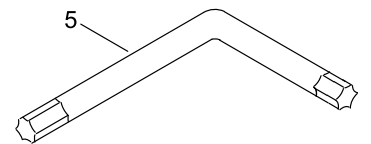
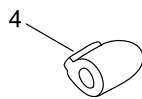
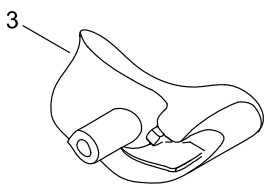
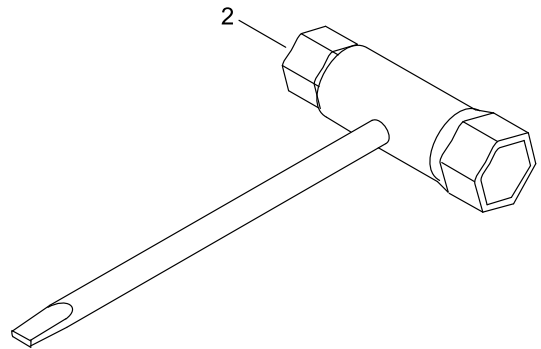
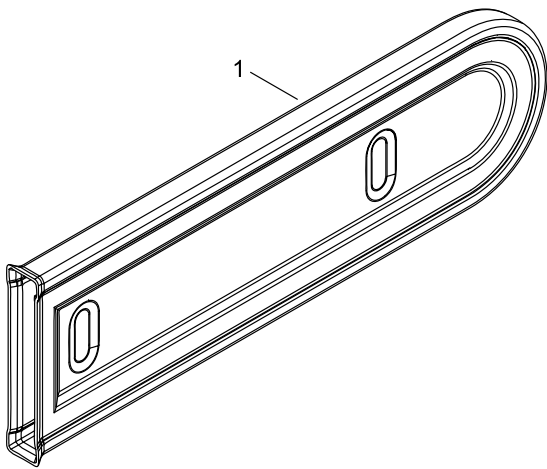
CHAIN BRAKE



CHAIN BRAKE

KEY NO	LV(+)	Part No	Description	Qty	Standard	Comment
1		175005-39133	DRUM, CLUTCH	1		
2		V555-000170	BEARING, NEEDLE 10	1	8E- KV10*13*12.8	
3		A551-000010	PLATE, CLUTCH	1		
4		A056-000071	CLUTCH	1		
5	+	A552-000020	HUB, CLUTCH	1		
6	+	P021-005811	CLUTCH SHOE SET	1		
7	+	V451-000470	SPRING, TENSION	3		
8		P021-048810	GUARD, SPROCKET ASY	1		
9	+	C300-000952	GUARD, SPROCKET	1		
10	+	C309-000030	TENSIONER, CHAIN	1		
11	+	V203-000041	BOLT, 5	1		
12	+	V651-000001	GEAR, BEVEL	1		
13	+	V651-000011	GEAR, BEVEL	1		
14	+	V355-000140	COLLAR, 8	1		
15	+	V804-000000	BOLT, TORX 4	1	TT-4*12 DG 10.9	
16	+	C345-000520	COVER, BRAKE	1		
17	+	V804-000000	BOLT, TORX 4	3	TT-4*12 DG 10.9	
18	+	C334-000290	CONNECTOR, BRAKE	1		
19	+	V450-000070	SPRING, COMPRESSION	1		
20	+	V376-000450	SPACER	1		
21	+	C328-000310	BAND, BRAKE	1		
22	+	93050-30098	ROLLER	1	F3*9.8	
23	+	433116-35430	SPACER 8	1	8*12*9	
24		V265-000200	NUT	2		
25		C320-000501	LEVER, BRAKE	1		
26		V805-000240	BOLT, TORX 5	1	TT-5*12 DG 10.9	
27		V356-000430	COLLAR, 10	1		
28		V452-001380	SPRING, TORSION	1		
29		X502-000340	LABEL, ECHO	1	ECHO(WHITE)	

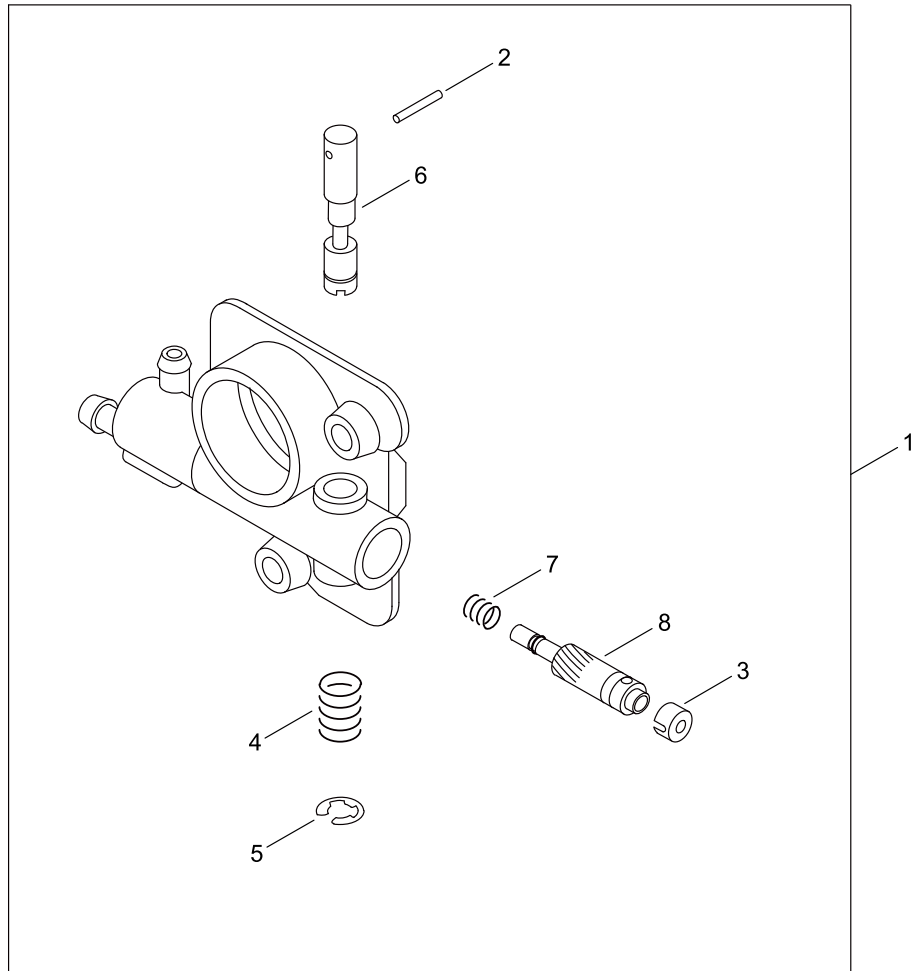
ACCESSORIES



ACCESSORIES

KEY NO	LV(+)	Part No	Description	Qty	Standard	Comment
1		X490-000510	SCABBARD,CHAIN	1		
2		X602-000080	TOOL,WRENCH	1	13*19 L180	
3		C401-000300	PIECE,HANDLE	1		
4		C401-000310	PIECE,HANDLE	1		
5		X605-000170	TOOL,L WRENCH	1		

OILER



OILER

KEY NO	LV(+)	Part No	Description	Qty	Standard	Comment
1		C022-000020	AUTO-OILER ASSEMBLY	1	OP-7	
2	+	P003-002180	PIN, SPRING	1		
3	+	437062-38330	CAP, OIL PUMP	1		
4	+	437015-37330	SPRING	1		
5	+	123127-15030	RING	1		
6	+	P003-001370	NEEDLE-ADJ	1		
7	+	437019-38330	SPRING	1		
8	+	437024-37330	PLUNGER	1		

GUIDE BAR, CHAIN

Pitch ピッチ (inch) (mm)	Gauge ゲージ (inch) (mm)	Length 長さ (cm)	Guide Bar ガイドバー		Saw Chain ソーチェーン		Hard Nose ハード ノーズ 	Sprocket Nose スプロケット ノーズ 
			Key №	Type 形式	Key №	Type 形式		
1/4 6.35	0.050 1.27	30	A1	C30H25-68CL- ED	A2	25A-68E	●	
					A3	25AP-68E		
1/4 6.35	0.050 1.27	35	B1	C35H25-76CL- ET	B2	25A-76E	●	
					B3	25AP-76E		
3/8 9.53	0.050 1.27	30	C1	C30S91-47ML- EC	C2	91PX-47E		●
3/8 9.53	0.050 1.27	35	D1	C35S91-53ML- EC	D2	91PX-53E		●

GUIDE BAR, CHAIN

KEY NO	LV(+)	Part No	Description	Qty	Standard	Comment
A1		X102-000071	BAR,GUIDE 30	1	C30H25-68CL-ED	
A2		X202-000010	CHAIN,SAW	1	25A-68E	
A3		431611-10030	CHAIN, SAW 25AP-68E	1	25AP-68E	
B1		X103-000111	BAR,GUIDE 35	1	C35H25-76CL-ET	
B2		X203-000000	CHAIN,SAW	1	25A-76E	
B3		431612-10030	CHAIN, SAW 25AP-76E	1	25AP-76E	
C1		X122-000341	BAR,GUIDE 30	1	C30S91-47ML-EC	
C2		X222-000140	CHAIN,SAW	1	91PX-47E	
D1		X123-000551	BAR,GUIDE 35	1	C35S91-53ML-EC	
D2		X223-000130	CHAIN,SAW	1	91PX-53E	

NUMERICAL PARTS INDEX

Part No	Part description	Page	Part No	Part description	Page	Part No	Part description	Page
100013-1-5330	PIN, PISTON	2	132012-1-1961	PIPE	2	91481-04-035	SCREW TAPPING	16
100014-6-0930	SPACER, PISTON PIN	2	132115-0-1462	GROMMET	2	93050-30-098	ROLLER	18
100015-0-4630	CIRCLIP, PISTON PIN	2	132115-4-4331	GROMMET, FUEL	4	94035-36-201	BEARING, BALL	2
100142-1-2330	KEY, WOODRUFF	6	150117-1-6430	SPACER	6	A021-00-4210	CARBURETOR, DIAPHRAGM	8
100910-1-8830	CUSHION	16	156110-0-4920	BUSHING	6	A021-00-4210	CARBURETOR, DIAPHRAGM	10
100918-1-5130	CAP	16	175005-3-9133	DRUM, CLUTCH	18	A051-00-2511	STARTER, RECOIL ASY	14
123127-1-5030	RING	22	177234-3-5430	SPRING, RETURN	6	A056-00-0071	CLUTCH	18
123181-3-9130	PUMP, PRIMER	4	177236-6-1830	SCREW	14	A101-00-0670	RING, PISTON	2
125310-1-3930	SCREW	10	177247-0-4630	SPACER, RATCHET	6	A127-00-0371	COVER, DUST	4
125314-5-1230	SCREW	10	431611-1-0030	CHAIN, SAW 25AP-68E	24	A172-00-2091	COVER, FAN	14
125322-1-3930	SPRING, COIL	10	431612-1-0030	CHAIN, SAW 25AP-76E	24	A202-00-0231	BELLOWS, INTAKE	8
125323-0-8260	ARM, VALVE	10	433026-3-5430	CATCHER, CHAIN	4	A225-00-0611	CASE, CLEANER	8
125325-0-8360	GASKET, PUMP	10	433116-3-5430	SPACER 8	18	A226-00-1820	ELEMENT, AIR FILTER	8
125327-1-3930	CLIP	10	436114-1-3930	VALVE, CHECK	4	A228-00-0030	SEAL, CLEANER	8
125327-1-5130	CLIP	10	437015-3-7330	SPRING	22	A235-00-0361	KNOB, CLEANER LID	8
125333-3-3330	SPRING, IDLE ADJUST	10	437019-3-8330	SPRING	22	A239-00-0000	PIPE, INTAKE	4
125337-0-8260	VALVE, INLET NEEDLE	10	437024-3-7330	PLUNGER	22	A240-00-0200	ROD, CHOKE	16
125338-1-3930	PIN, METERING ARM	10	437062-3-8330	CAP, OIL PUMP	22	A244-00-0280	PLATE, PREVENT	8
125339-1-3930	SCREW	10	890157-3-9131	LABEL, SWITCH	16	A253-00-0090	LEVER, CONTROL	16
125344-0-8560	SCREW	10	900242-0-4010	SCREW 4*10	12	A300-00-1841	MUFFLER, EXHAUST	12
125348-1-3930	SCREW	10	900515-0-0008	NUT, FLANGE 8	6	A310-00-0431	SCREEN, ARRESTOR	12
125378-1-3930	PIECE, FRICTION	10	900603-0-0005	WASHER 5	6	A312-00-0070	PLATE, EXHUST	12
130020-3-3330	NUT	16	900720-0-0018	O-RING 18	4	A313-00-1980	GUIDE, EXHAUST	12
131300-5-6431	VENT ASSEMBLY, FUEL	4	900724-0-0004	O-RING (S-4)	4	A320-00-1080	COVER, MUFFLER	12

NUMERICAL PARTS INDEX

Part No	Part description	Page	Part No	Part description	Page	Part No	Part description	Page
A365-00-0050	CONNECTOR,CAP	4	C401-00-0320	PIECE,HANDLE	16	P005-00-3210	COVER, METERING	10
A369-00-0420	STRAINER, FUEL	4	C450-00-0731	CONTROL, THROTTLE	16	P005-00-3220	SCREW	10
A409-00-1240	ROTOR, MAGNETO	6	C454-00-0491	ROD, THROTTLE	16	P005-00-3230	LEVER, CHOKE	10
A411-00-1501	COIL, IGNITION	6	C460-00-0002	LOCKOUT, THROTTLE	16	P005-00-3240	VALVE, CHOKE	10
A425-00-0000	SPARKPLUG	6	C626-00-0070	FIXTURE, HARNESS	4	P021-00-5581	OIL CAP ASY	4
A426-00-0010	TERMINAL, SPARKPLUG	6	C646-00-0100	RING, HARNESS	4	P021-00-5591	CAP ASY	4
A427-00-0013	CAP,SPARK PLUG	6	P003-00-1370	NEEDLE-ADJ	22	P021-00-5811	CLUTCH SHOE SET	18
A429-00-0160	COVER,CAP	4	P003-00-2180	PIN, SPRING	22	P021-03-9160	CRANKSHAFT ASY	2
A514-00-0270	PAWL	6	P005-00-0790	SPRING,THRT. RETURN	10	P021-04-1820	HANDLE SET, REAR	16
A551-00-0010	PLATE,CLUTCH	18	P005-00-0860	SCREEN, FUEL INLET	10	P021-04-5440	PISTON KIT	2
A552-00-0020	HUB,CLUTCH	18	P005-00-0880	SPRING, CHOKE RETURN	10	P021-04-5451	MUFFLER ASY	12
C022-00-0020	AUTO-OILER ASSEMBLY	2	P005-00-1110	DIAPHRAGM, PUMP	10	P021-04-8810	GUARD, SPROCKET ASY	18
C022-00-0020	AUTO-OILER ASSEMBLY	22	P005-00-2370	NEEDLE, HIGH SPEED	10	P022-00-1330	SPRING KIT, REWIND	14
C300-00-0952	GUARD, SPROCKET	18	P005-00-2380	NEEDLE, IDLE	10	P022-00-5891	GRIP, STARTER	14
C304-00-0000	SPIKE	4	P005-00-2390	SHAFT, CHOKE	10	P022-00-8440	ROPE, STARTER	14
C305-00-0430	PLATE,SPROCKET GUARD	4	P005-00-2400	PLUG, WELCH	10	P022-03-3280	SPRING CASE	14
C309-00-0030	TENSIONER,CHAIN	18	P005-00-3130	NOZZLE, CHECK VALVE	10	P022-03-6660	DRUM, STARTER	14
C320-00-0501	LEVER, BRAKE	18	P005-00-3140	SHAFT ASY, THROTTLE	10	P022-03-6670	SPRING,DAMPER	14
C328-00-0310	BAND, BRAKE	18	P005-00-3150	LEVER, THROTTLE	10	P022-03-6680	PLATE, CAM	14
C334-00-0290	CONNECTOR, BRAKE	18	P005-00-3160	VALVE, THROTTLE	10	P022-04-2410	CASE,STARTER	14
C345-00-0520	COVER,BRAKE	18	P005-00-3170	SCREW	10	P100-00-1900	STRAINER, OIL	2
C400-00-1150	HANDLE, FRONT	16	P005-00-3180	COVER, PUMP	10	P100-00-2760	CLEANER COVER ASY	8
C401-00-0300	PIECE,HANDLE	20	P005-00-3190	DIAPHRAGM , METERING	10	P100-00-7010	CRANKCASE SET	2
C401-00-0310	PIECE,HANDLE	20	P005-00-3200	GASKET, METERING	10	P100-00-7020	COVER ENGINE ASY	4

NUMERICAL PARTS INDEX

Part No	Part description	Page	Part No	Part description	Page	Part No	Part description	Page
V104-00-1960	GASKET,EXHAUST	12	V470-00-1910	PIPE	8	V804-00-0060	BOLT, TORX 4	14
V104-00-1980	GASKET,EXHAUST	12	V471-00-0741	PIPE	2	V805-00-0010	BOLT, TORX 5	4
V137-00-0001	GROMMET,FUEL	4	V471-00-2291	PIPE	4	V805-00-0010	BOLT, TORX 5	12
V186-00-0530	JOINT,PIPE	4	V471-00-3381	PIPE	4	V805-00-0010	BOLT, TORX 5	16
V187-00-0010	NIPPLE	2	V471-00-3391	PIPE	4	V805-00-0080	BOLT, TORX 5	8
V202-00-0000	BOLT,4	16	V471-00-3401	PIPE	4	V805-00-0140	BOLT, TORX 5	4
V203-00-0041	BOLT,5	18	V471-00-3411	PIPE	4	V805-00-0140	BOLT, TORX 5	8
V203-00-0080	BOLT,5	6	V475-00-1900	TUBE	6	V805-00-0150	BOLT, TORX 5	12
V225-00-0262	BOLT,STUD 8	4	V475-00-2390	TUBE	6	V805-00-0180	BOLT, TORX 5	4
V265-00-0200	NUT	18	V485-00-2430	LEAD	6	V805-00-0210	BOLT, TORX 5	2
V308-00-0030	WASHER,CIRCULAR 11	2	V485-00-2441	LEAD	16	V805-00-0210	BOLT, TORX 5	4
V311-00-0170	WASHER,CIRCULAR 16-1	8	V486-00-0371	TERMINAL,LEAD	16	V805-00-0210	BOLT, TORX 5	6
V351-00-0000	COLLAR,3	8	V490-00-1230	CLIP	2	V805-00-0240	BOLT, TORX 5	18
V352-00-0020	COLLAR,4	16	V490-00-1240	CLIP	4	V805-00-0250	BOLT, TORX 5	12
V355-00-0140	COLLAR,8	18	V505-00-0011	SEAL,OIL 12	2	X102-00-0071	BAR,GUIDE 30	24
V356-00-0290	COLLAR,10	2	V553-00-0130	BEARING,NEEDLE 8	2	X103-00-0111	BAR,GUIDE 35	24
V356-00-0430	COLLAR,10	18	V555-00-0170	BEARING,NEEDLE 10	18	X122-00-0341	BAR,GUIDE 30	24
V376-00-0450	SPACER	18	V651-00-0001	GEAR,BEVEL	18	X123-00-0551	BAR,GUIDE 35	24
V400-00-0070	CUSHION,4	16	V651-00-0011	GEAR,BEVEL	18	X202-00-0010	CHAIN,SAW	24
V450-00-0070	SPRING, COMPRESSION	18	V652-00-0030	GEAR,WORM	2	X203-00-0000	CHAIN,SAW	24
V451-00-0470	SPRING,TENSION	18	V804-00-0000	BOLT, TORX 4	4	X222-00-0140	CHAIN,SAW	24
V451-00-1411	SPRING,TENSION	8	V804-00-0000	BOLT, TORX 4	18	X223-00-0130	CHAIN,SAW	24
V452-00-0010	SPRING,TORSION	16	V804-00-0010	BOLT, TORX 4	16	X490-00-0510	SCABBARD,CHAIN	20
V452-00-1380	SPRING,TORSION	18	V804-00-0050	BOLT, TORX 4	2	X502-00-0340	LABEL,ECHO	18

NUMERICAL PARTS INDEX

Part No	Part description	Page
X502-00-0780	LABEL,ECHO	14
X503-01-5190	LABEL,MODEL	8
X505-00-0181	LABEL,CAUTION	4
X505-00-2441	LABEL,CAUTION	4
X505-00-7710	LABEL,CAUTION	12
X602-00-0080	TOOL,WRENCH	20
X605-00-0170	TOOL,L WRENCH	20