

# CS-501SXH

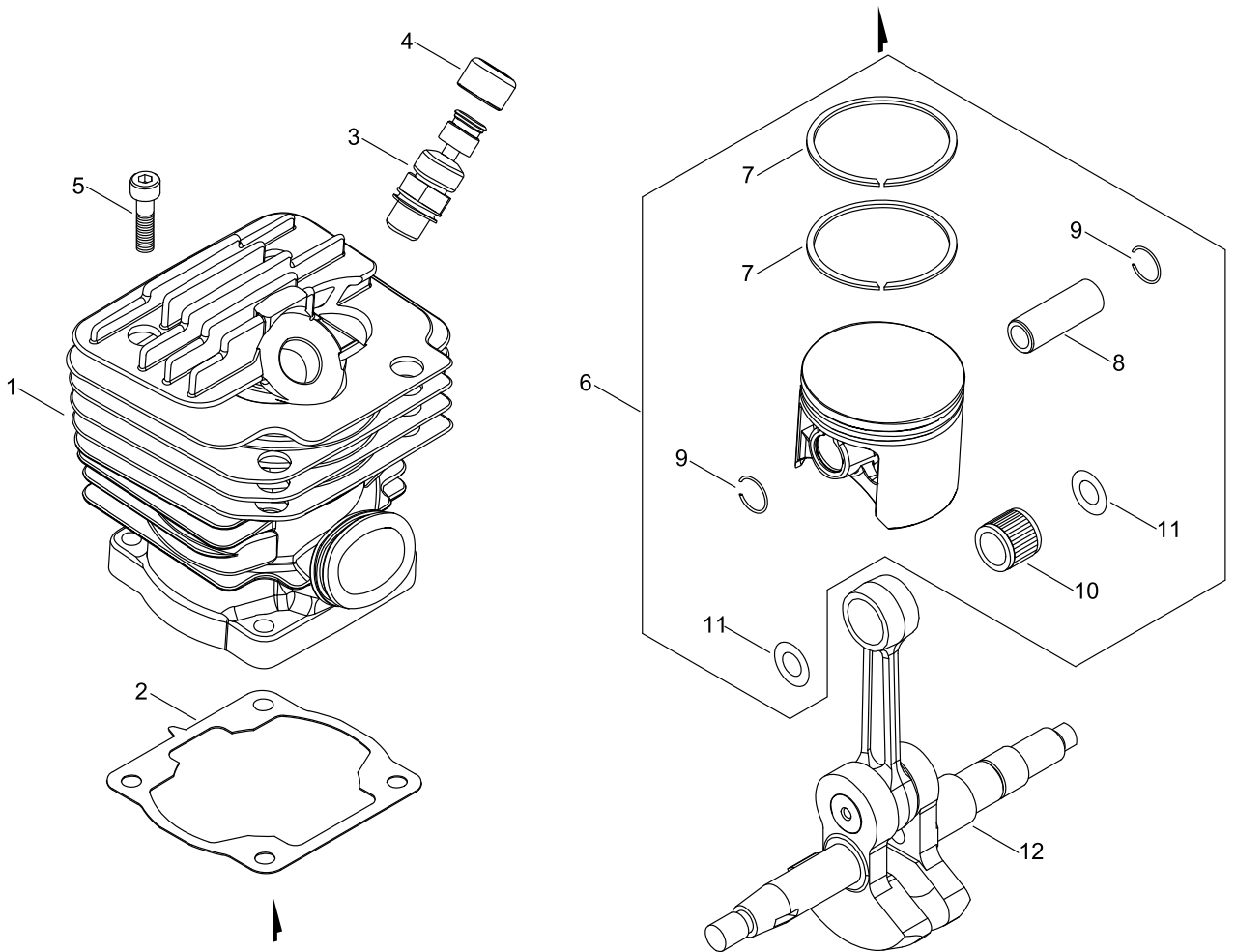
Published:11/29/2018

## TABLE OF CONTENTS

---

CYLINDER, PISTON, CRANKSHAFT.....	1
CRANKCASE .....	3
MAGNETO.....	5
AIR CLEANER, CARBURETOR.....	7
CARBURETOR.....	9
MUFFLER .....	11
RECOIL STARTER.....	13
HANDLE .....	15
CHAIN BRAKE.....	17
ACCESSORIES .....	21
GUIDE BAR, CHAIN .....	23
OPTION PARTS .....	25

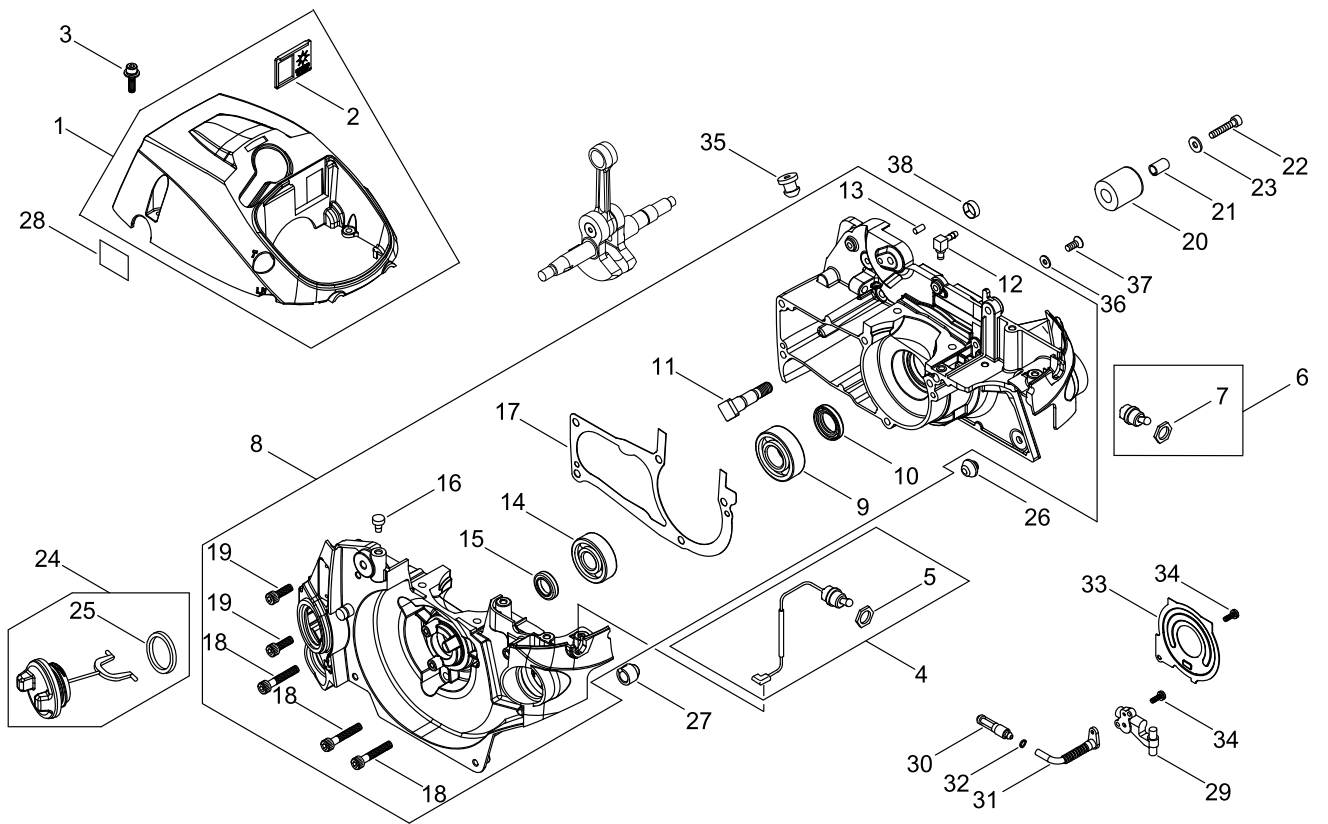
# CYLINDER, PISTON, CRANKSHAFT



## CYLINDER, PISTON, CRANKSHAFT

KEY NO	LV(+)	Part No	Description	Qty	Standard	Comment
1		A130-002280	CYLINDER	1		
2		V100-000620	GASKET,CYL	1		
3		A014-000120	RELEASE ASY., COMP.	1		
4		V141-000090	GROMMET,PLUG	1		
5		V203-001320	BOLT ADHESIVE	4		
6		P021-048650	PISTON KIT	1		
7	+	A101-000690	RING, PISTON	2	44*1.2*1.8	
8	+	V609-000070	PIN,ENG 11	1	11*35.8 HL	
9	+	V580-000030	RING,END	2	D 1.0	
10	+	V556-000040	BEARING,NEEDLE 11	1		
11	+	V308-000040	WASHER,CIRCULAR 11	2	11.2*19.5*0.5	
12		A011-001420	CRANKSHAFT,ASY	1		

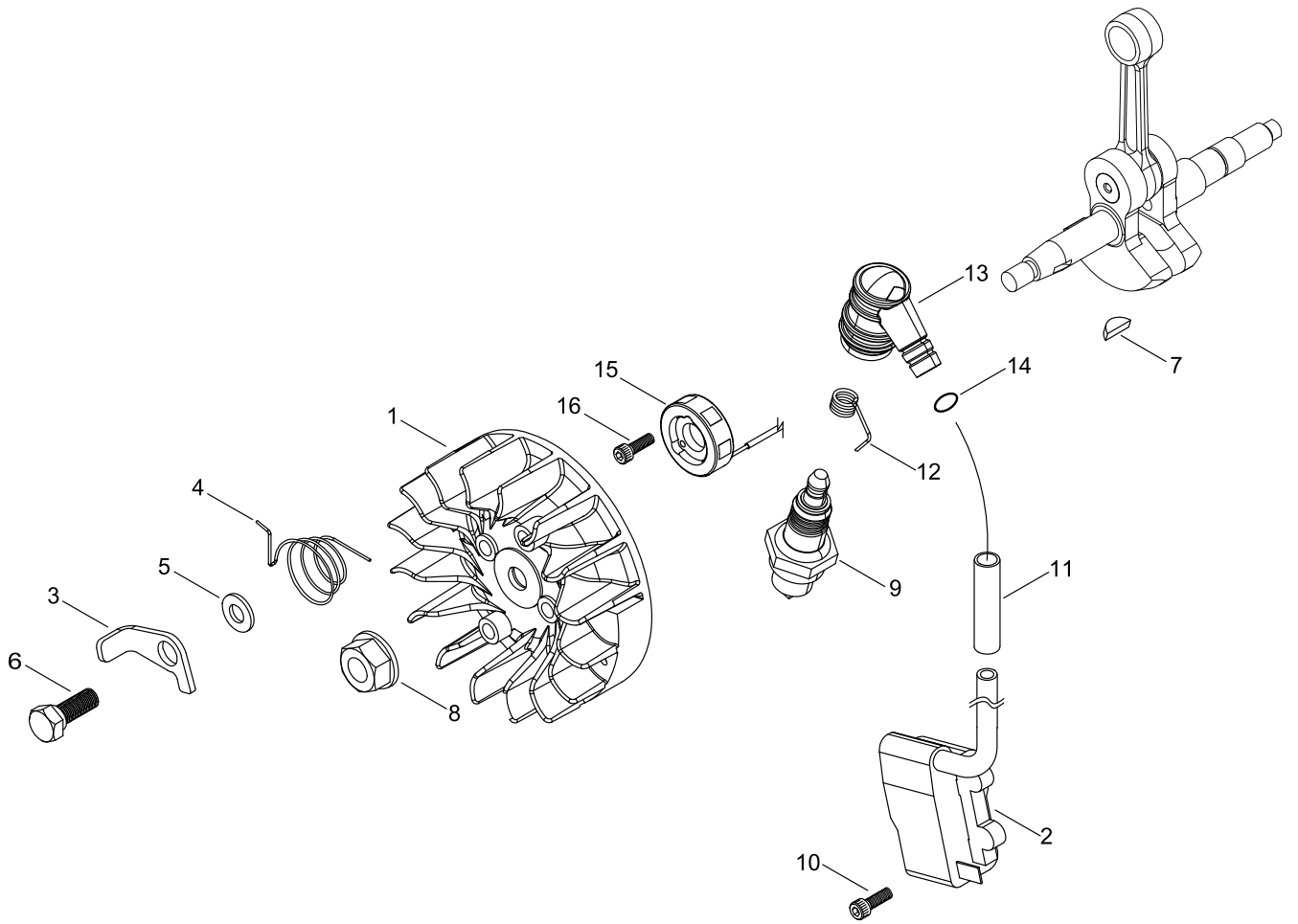
# CRANKCASE



## CRANKCASE

KEY NO	LV(+)	Part No	Description	Qty	Standard	Comment
1		P100-000740	CYLINDER COVER ASY	1		
2	+	A219-000040	SHUTTER,AIR	1		
3		V202-000690	BOLT,4	3	M4*14	
4		P021-037400	SWITCH, ON OFF	1		
5	+	V266-000090	NUT,10	1		
6		A440-001630	SWITCH	1		
7	+	V266-000090	NUT,10	1		
8		P021-051950	CRANK CASE SET	1		
9	+	V592-000290	BEARING, BALL	1	6202X47C3	
10	+	V508-000070	OIL SEAL	1		
11	+	V225-000150	BOLT,STUD	2		
12	+	437239-14730	NIPPLE	1		
13	+	V629-000000	ROLLER	2		
14	+	V592-000330	BEARING, BALL	1	6201X3C3	
15	+	V505-000070	OIL SEAL	1		
16	+	A356-000130	VALVE,CHECK	1		
17	+	V102-000220	GASKET,CRANKCASE	1		
18	+	V203-001450	BOLT	3		
19	+	V203-001540	BOLT,ADHESIVE	2		
20		C310-000110	CATCHER, CHAIN	1		
21		V353-000460	BUSH	1		
22		900105-05030	BOLT, H.S. 5*30	1	5*30	
23		900600-00005	WASHER 5	1	5	
24		C020-000040	CAP	1		
25	+	V107-000090	GASKET	1		
26		V420-004980	CUSHION	1		
27		V420-002780	CUSHION	1		
28		890345-39231	LABEL,CAUTION	1		
29		C022-000121	AUTO-OILER ASSEMBLY	1		
30		C209-000070	STRAINER,OIL	1		
31		V470-001840	PIPE	1		
32		V490-001230	CLIP	1		
33		C236-000060	COVER,OILER	1		
34		V202-000520	BOLT,4	3		
35		V133-000040	GROMMET	1		
36		900603-00004	WASHER 4	1	4.5*10*0.8	
37		900212-04008	SCREW 4*8	1	+SF4*8	
38		V355-000460	COLLAR,8	1		

# MAGNETO

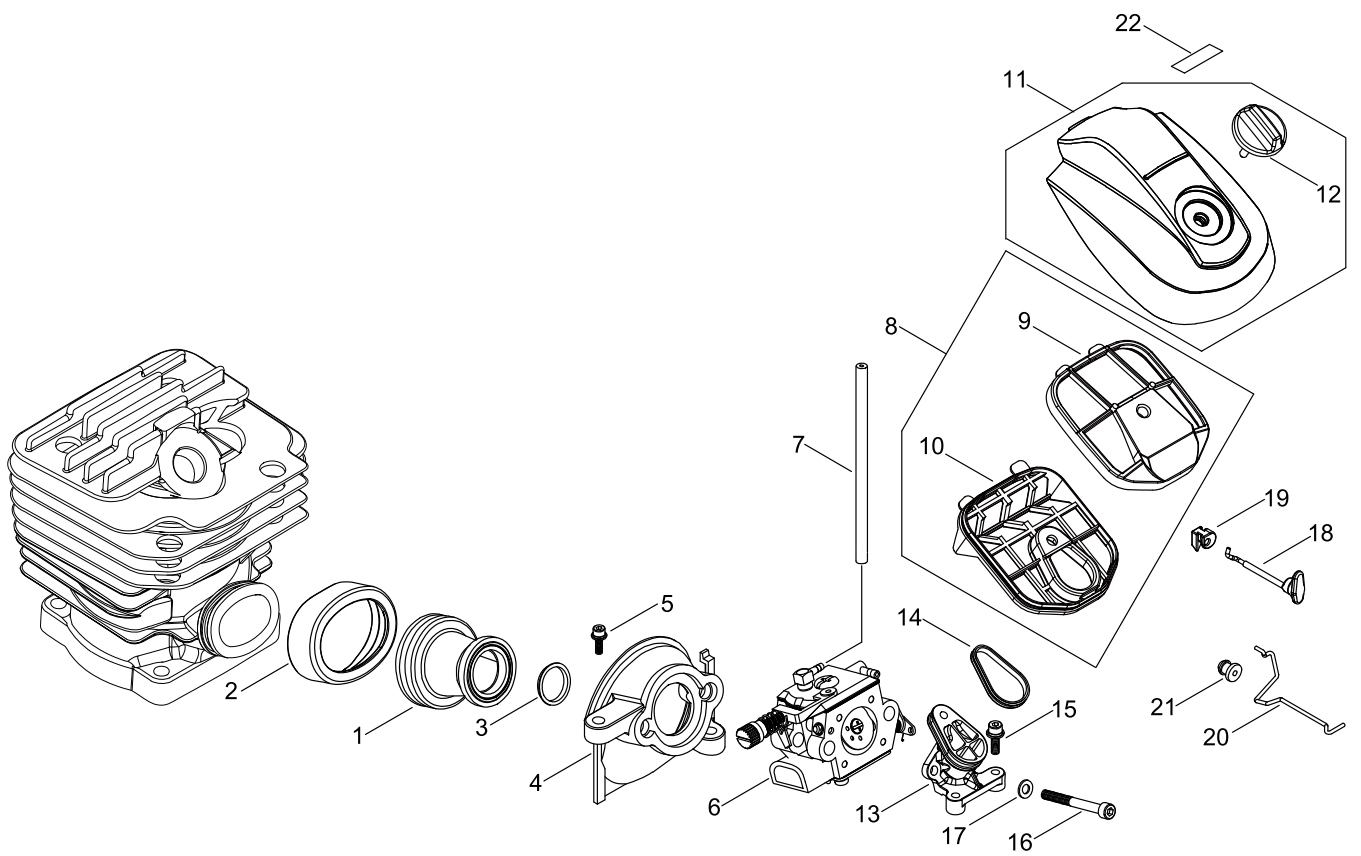


## MAGNETO

KEY NO	LV(+)	Part No	Description	Qty	Standard	Comment
1		A409-001081	ROTOR, MAGNETO	1		
2		P021-037541	COIL, IGNITION	1		
3		A514-000220	PAWL	2		
4		V452-000870	SPRING,TORSION	2		
5		V304-000270	WASHER,CIRCULAR 6	2		
6		V204-000620	BOLT	2		
7		93115-03010	KEY	1	3*10	
8		V265-000220	NUT	1		
9		A425-000000	SPARKPLUG	1	BPMR8Y	
10		V202-000540	BOLT,4	2		
11		V475-005180	TUBE	1		
12		A426-000040	TERMINAL,SPARKPLUG	1		
13		A427-000160	PLUG CAP	1		
14		900720-20007	O-RING 7	1	P-7	
15		A041-000000	STATOR,ASM	1		
16		V202-000530	BOLT,4	2		



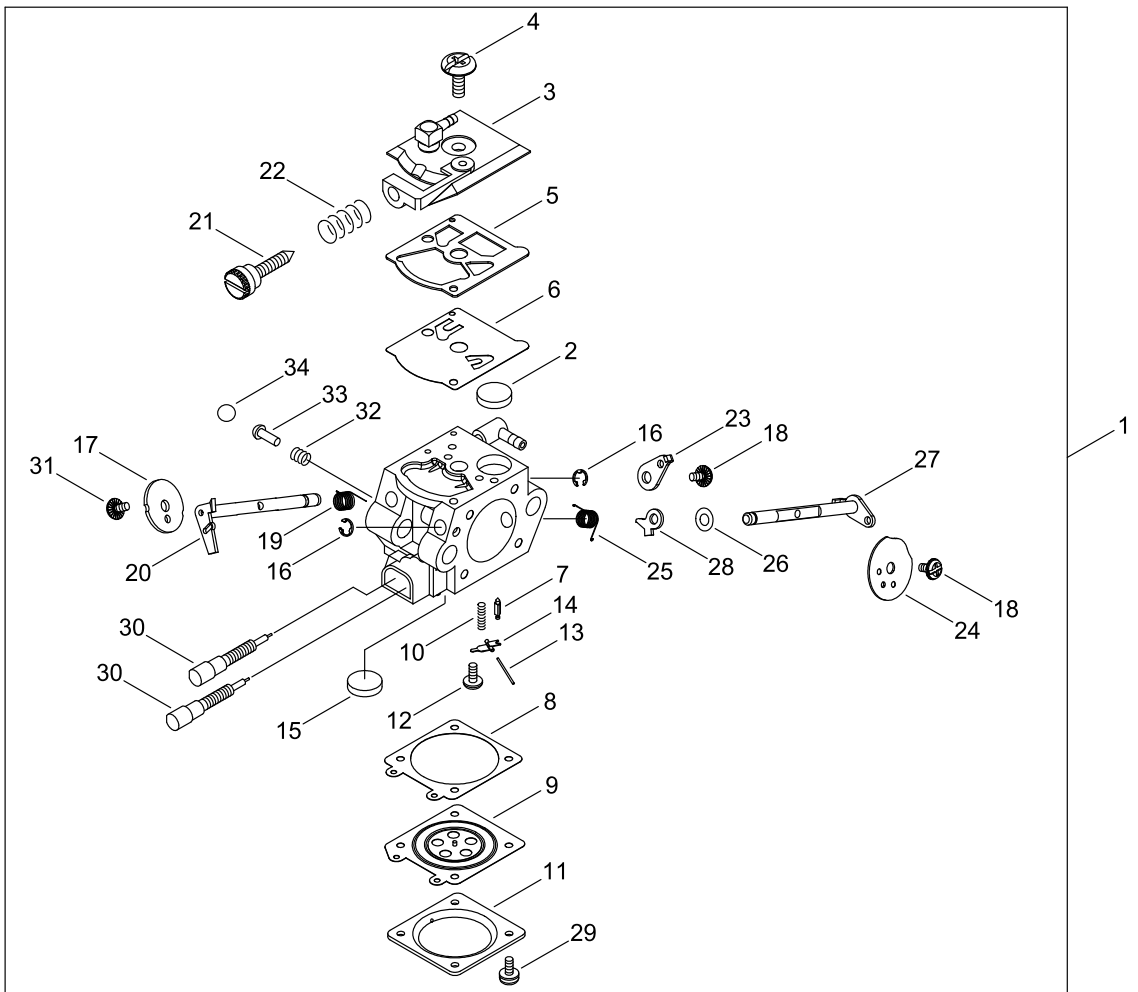
# AIR CLEANER, CARBURETOR



## AIR CLEANER, CARBURETOR

KEY NO	LV(+)	Part No	Description	Qty	Standard	Comment
1		A202-000150	BOOT	1		
2		A206-000030	HOLDER, BELLOWS	1		
3		V359-000200	COLLAR	1		
4		A200-001050	INSULATOR,INTAKE	1		
5		V202-000200	BOLT	2		
6		A021-004410	CARBURETOR, DIAPHRAGM	1	WT-1139 D-CUT	
7		V471-002800	PIPE	1		
8		A226-001580	ELEMENT,AIR FILTER	1		
9	+	A226-001590	ELEMENT,AIR FILTER	1		
10	+	A226-001600	ELEMENT,AIR FILTER	1		
11		P100-000670	LID,CLEANER ASY	1		
12	+	A235-000270	KNOB,CLEANER LID	1		
13		A204-000220	ELBOW, CARBURETOR	1		
14		V581-000280	GASKET	1		
15		V202-000200	BOLT	2		
16		91100-05048	BOLT	2		
17		900600-00005	WASHER 5	2	5	
18		A240-000111	ROD, CHOKE	1		
19		V130-000131	GROMMET,CHOKE	1		
20		C454-000280	ROD,THROTTLE	1		
21		V133-000040	GROMMET	1		
22		X503014150	LABEL,MODEL	1		

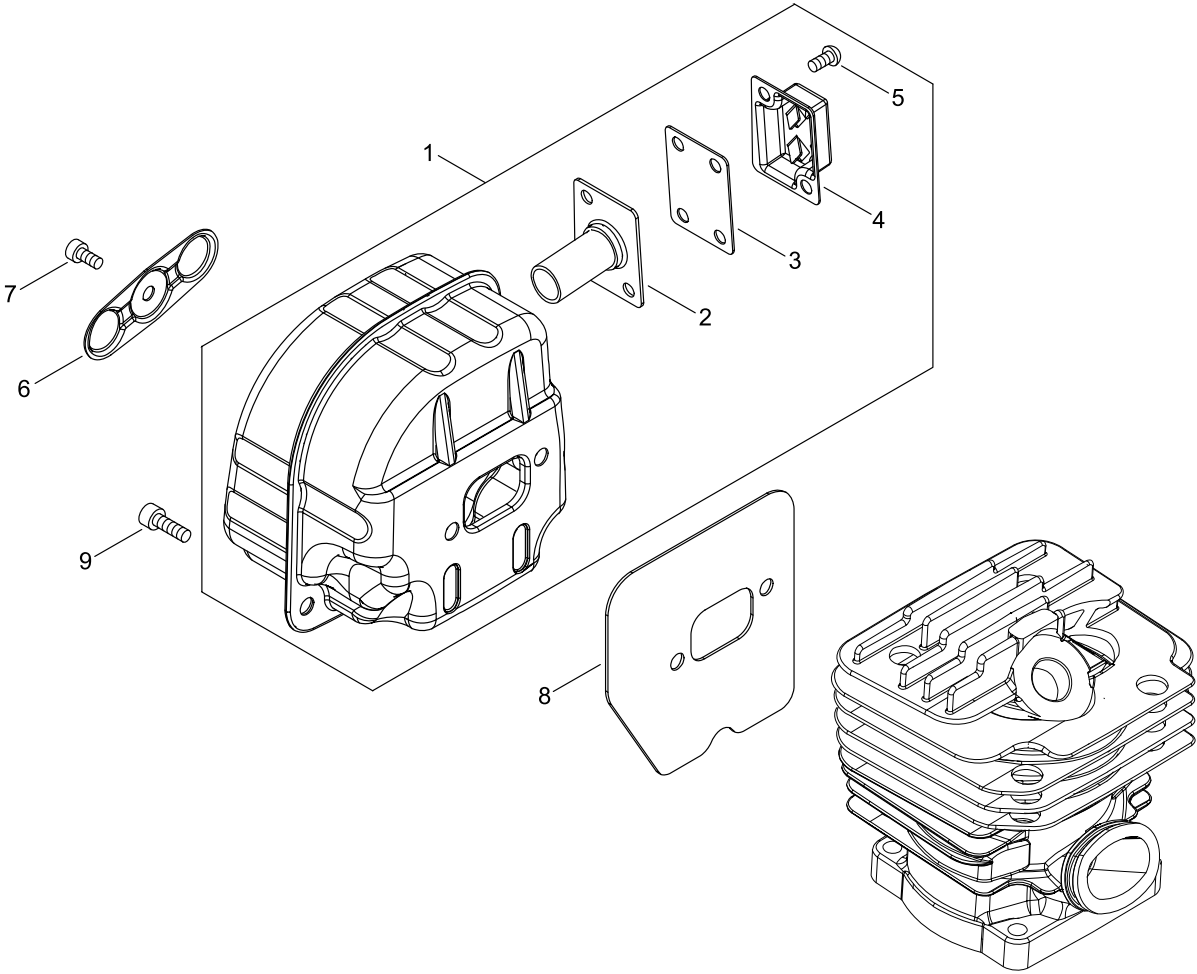
# CARBURETOR



## CARBURETOR

KEY NO	LV(+)	Part No	Description	Qty	Standard	Comment
1		A021-004410	CARBURETOR, DIAPHRAGM	1	WT-1139 D-CUT	
2	+	123126-10631	SCREEN, INLET	1		
3	+	P003-005600	PUMP COVER ASY	1		
4	+	123110-03930	SCREW, PUMP COVER	1		
5	+	123125-15030	GASKET, FUEL PUMP	1		
6	+	123112-15030	DIAPHRAGM, FUEL PUMP	1		
7	+	123137-19830	VALVE, INLET NEEDLE	1		
8	+	123140-03930	GASKET, M. DIAPHRAGM	1		
9	+	P003-001850	DIAPHRAGM, METERING	1		
10	+	123122-03660	SPRING, METER. LEVER	1		
11	+	123142-03930	COVER, M. DIAPHRAGM	1		
12	+	123139-03930	SCREW, M. LEVER PIN	1		
13	+	123138-03930	PIN, METERING LEVER	1		
14	+	123123-03930	LEVER, METERING	1		
15	+	123146-10631	PLUG, WELCH	1		
16	+	123127-15030	RING	2		
17	+	123116-10530	VALVE, THROTTLE	1		
18	+	123114-38830	SCREW	2		
19	+	123113-37530	SPRING, THROTTLE RTN	1		
20	+	P003-005620	SHAFT ASSY	1		
21	+	P003-003650	IDEL SCREW	1		
22	+	123133-04260	SPRING, IDLE ADJUST	1		
23	+	P003-003180	THROTTLE LEVER	1		
24	+	P003-005590	VALVE, CHOKE	1		
25	+	P003-002260	SPRING	1		
26	+	123149-26030	WASHER	1		
27	+	P003-003190	SHAFT	1		
28	+	P003-001510	LEVER-FAST IDLE	1		
29	+	123130-02960	SCREW	4		
30	+	P003-004460	NEEDLE	2		
31	+	P003-002380	SCREW	1		
32	+	123186-09660	SPRING, START VALVE	1		
33	+	123185-09660	PISTON ASSY	1		
34	+	123136-09660	BALL	1		

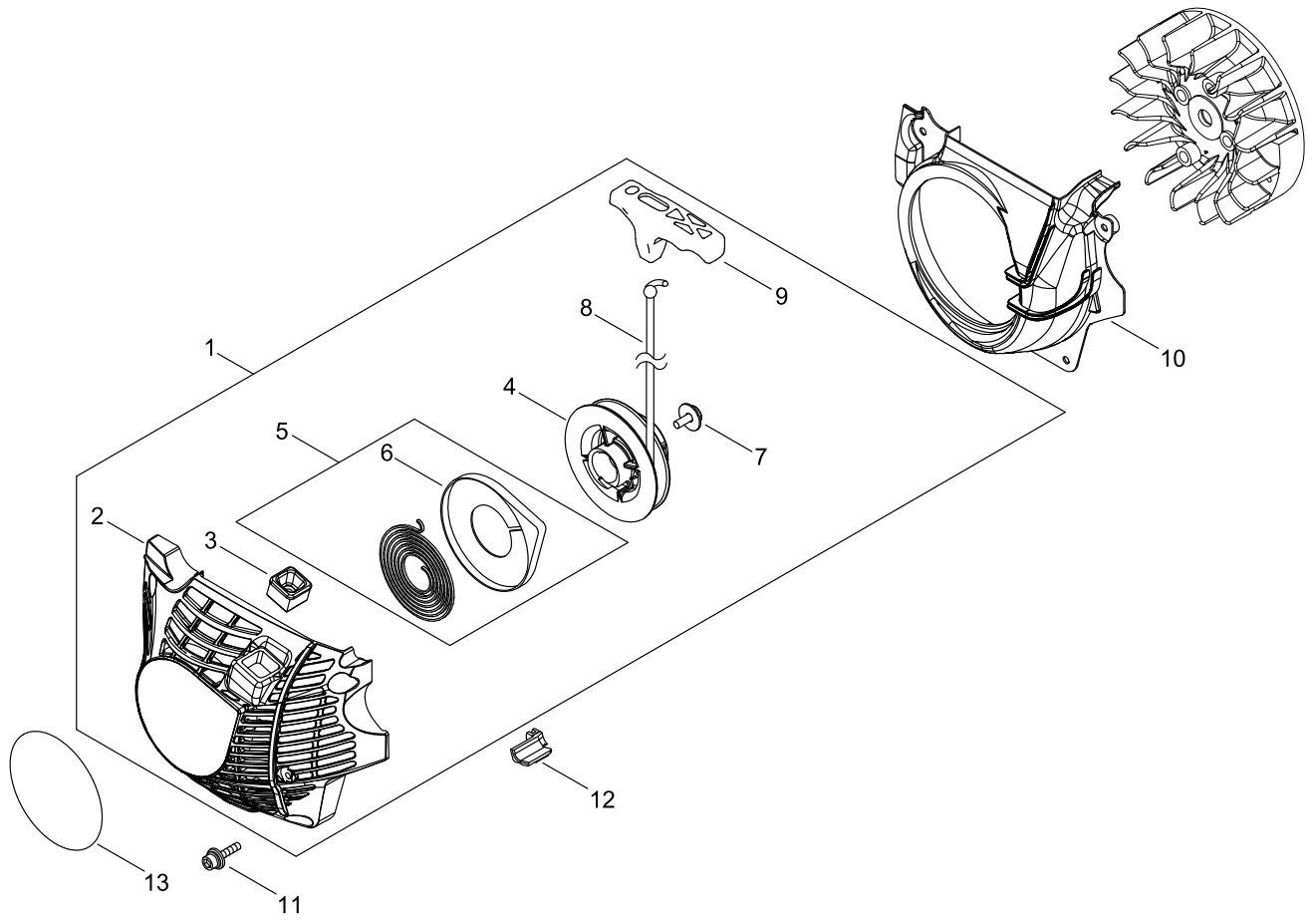
MUFFLER



## MUFFLER

KEY NO	LV(+)	Part No	Description	Qty	Standard	Comment
1		P021-048660	MUFFLER ASY	1		
2	+	A313-001481	GUIDE, EXHAUST	1		
3	+	A310-000450	SCREEN, ARRESTOR	1		
4	+	A313-002010	GUIDE, EXHAUST	1	ID:2220	
5	+	91578-04006	SCREW	2		
6		A301-000060	PLATE, MUFFLER	1		
7		900105-04006	BOLT, H.S. 4*6	1	4*6	
8		V104-001780	GASKET,EXHAUST	1		
9		V203-002200	BOLT,5	4	M5X18	

# RECOIL STARTER

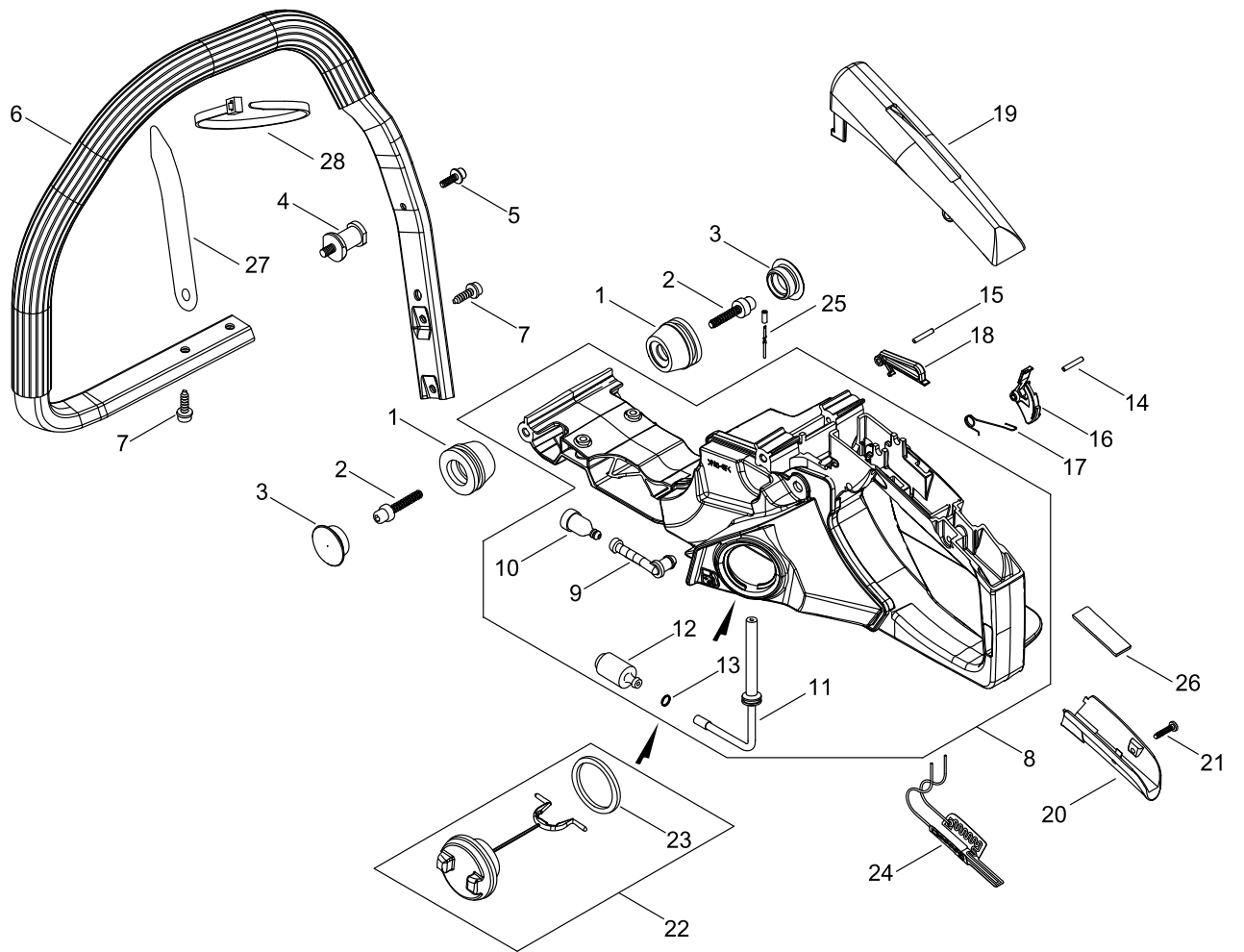


## RECOIL STARTER

KEY NO	LV(+)	Part No	Description	Qty	Standard	Comment
1		A051-003000	STARTER,RECOIL	1		
2	+	P022-039770	CASE, STARTER	1		
3	+	A510-000130	GUIDE,ROPE	1		
4	+	P022-039780	DRUM, STARTER	1		
5	+	A504-000190	RECOIL SPRING ASSY	1		
6	++	P022-039790	SPRING CASE	1		
7	+	177236-06910	SCREW	1		
8	+	P022-023100	ROPE, STARTER	1		
9	+	P022-036780	GRIP, STARTER	1		
10		A172-001870	COVER,FAN	1		
11		V202-000200	BOLT	4		
12		V131-000190	GROMMET,NEEDLE	1		
13		X502-000900	LABEL,ECHO	1		



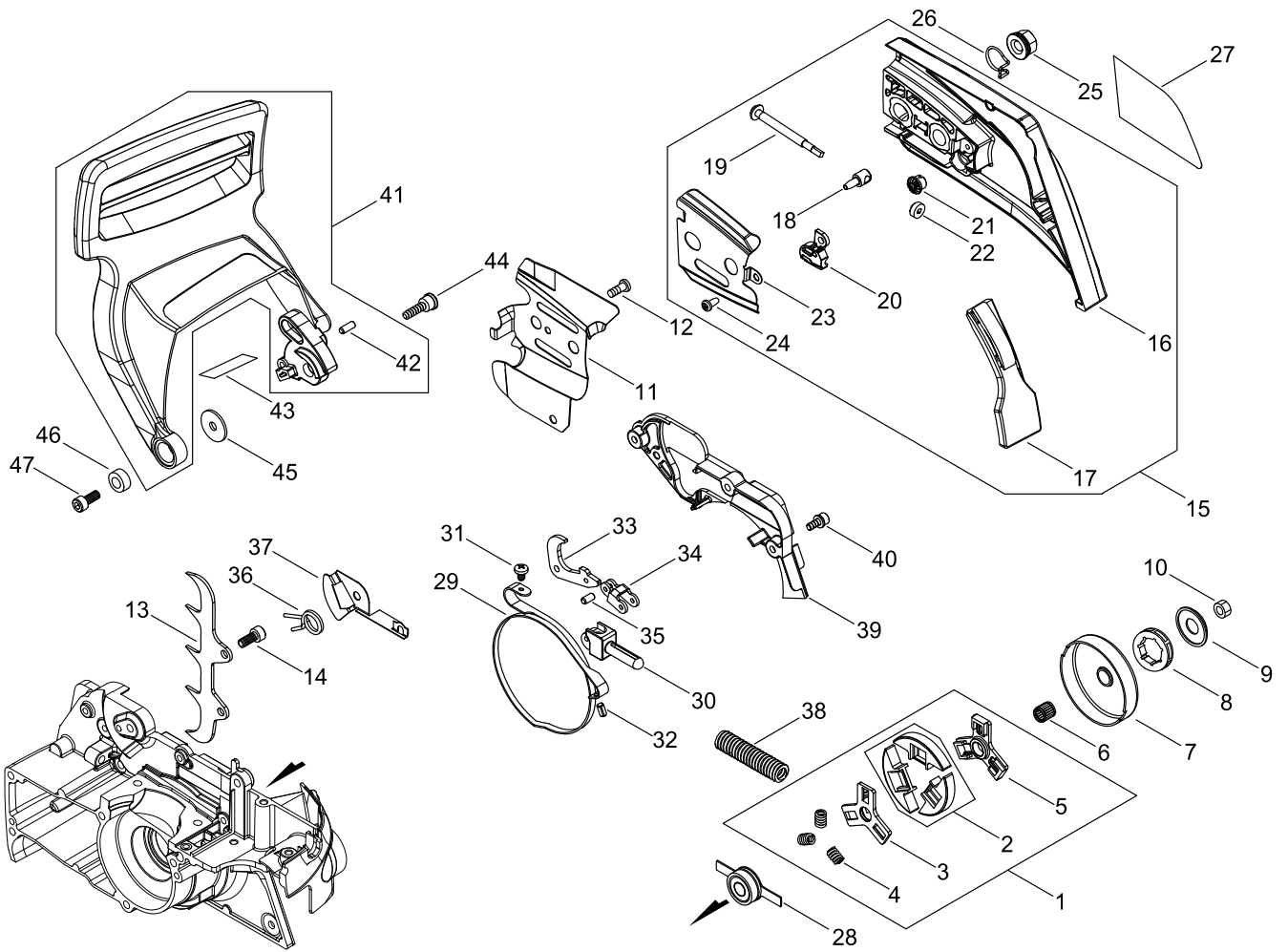
HANDLE



## HANDLE

KEY NO	LV(+)	Part No	Description	Qty	Standard	Comment
1		V401-000610	CUSHION,5	4		
2		V203-001950	BOLT,5	4		
3		V421-000070	CAP,CUSHION	4		
4		V401-000330	CUSHION	1		
5		V202-000350	BOLT-SPW	1	M4-14	
6		C040-000840	HANDLE, FRONT	1		
7		V203-001490	BOLT TAPPING	4		
8		P100-000750	HANDLE ASY, REAR	1		
9	+	V470-001530	PIPE	1		
10	+	131300-56431	VENT ASSEMBLY, FUEL	1		
11	+	V470-001520	PIPE	1		
12	+	A369-000450	STRAINER, FUEL	1		
13	+	V490-000500	CLIP	1		
14		93060-40250	PIN, SPRING	1		
15		93042-40220	PIN, SPRING	1		
16		C450-000642	CONTROL, THROTTLE	1		
17		V452-000850	SPRING,TORSION	1		
18		C460-000390	LOCKOUT,THROTTLE	1		
19		C411-000170	LID,HANDLE	1		
20		C403-000530	GRIP	1		
21		91449-04022	SCREW TAPPING	1		
22		A033-000370	CAP ASSY	1		
23	+	V107-000070	GASKET	1		
24		C406-000020	HEATER,HANDLE	1		
25		C483-000040	BOOT, CONNECTOR	2		
26		V420-002790	CUSHION	1		
27		C401-000260	COVER	1		
28		V495-001580	BAND	1		

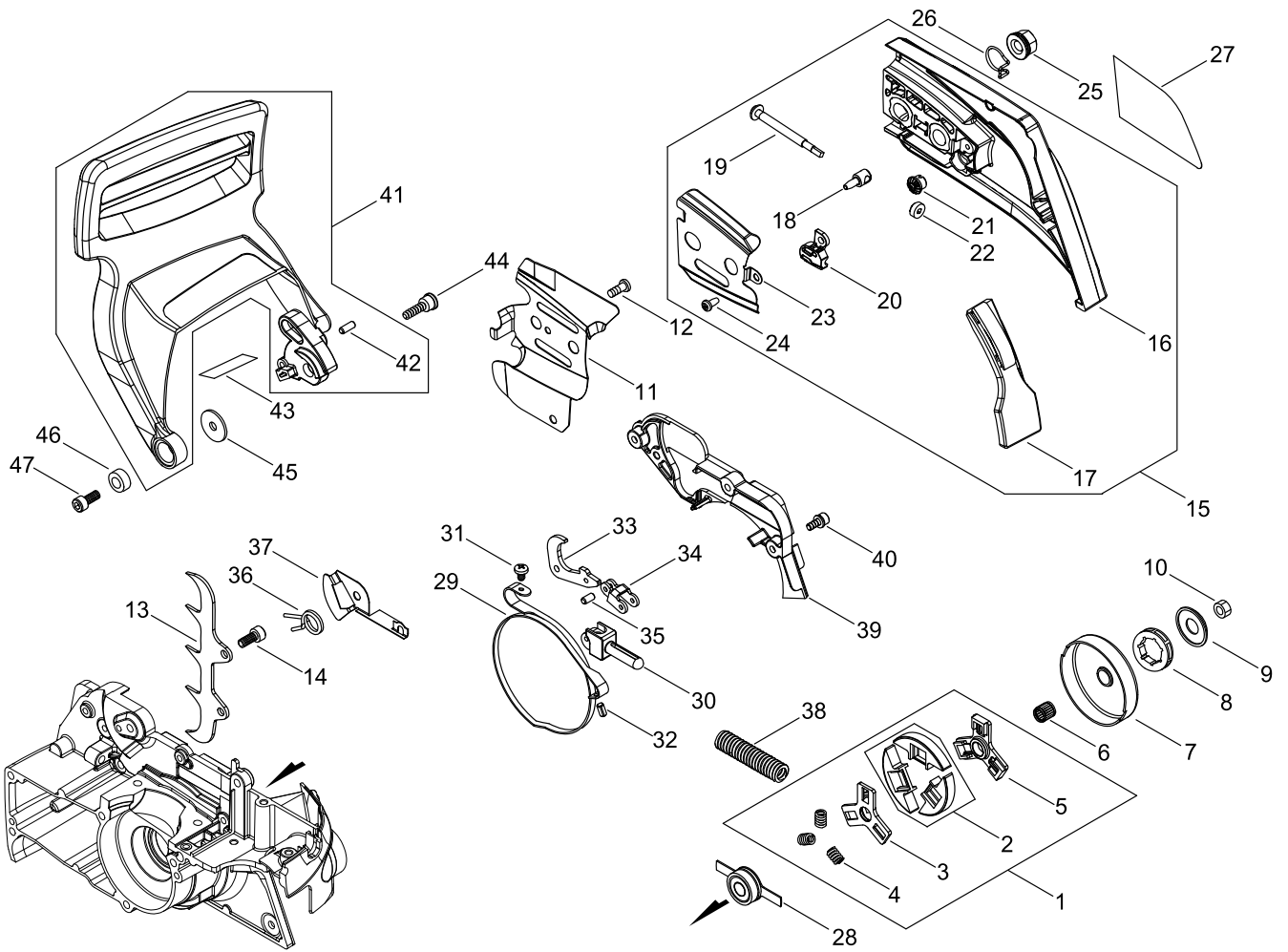
# CHAIN BRAKE



## CHAIN BRAKE

KEY NO	LV(+)	Part No	Description	Qty	Standard	Comment
1		A056-000611	CLUTCH ASY	1		
2	+	P100-000270	CLUTCH SHOE SET	1		
3	+	A552-000231	HUB, CLUTCH	1		
4	+	V451-000930	SPRING	3		
5	+	A552-000241	HUB, CLUTCH	1		
6		V555-000150	BEARING,NEEDLE	1		
7		A556-001121	DRUM, CLUTCH	1		
8		175114-12530	SPROCKET, RIM .325	1		
9		V307-000451	WASHER,CIRCULAR 10	1		
10		V265-000211	NUT,8	1		
11		C305-000411	PLATE,SPROCKET GUARD	1		
12		V252-000470	SCREW,4	1		
13		C304-000310	SPIKED	1		
14		V203-002010	BOLT,5	2		
15		P021-049100	GUARD, SPROCKET ASY	1		
16	+	C300-001040	GUARD, SPROCKET	1		
17	+	C302-000030	PROTECTOR	1		
18	+	C309-000190	TENSIONER, CHAIN	1		
19	+	V203-000021	BOLT,5	1		
20	+	V355-000840	COLLAR,8	1		
21	+	V651-001060	GEAR,BEVEL	1		
22	+	V651-000011	GEAR,BEVEL	1		
23	+	C305-000470	PLATE,SPROCKET GUARD	1	T=0.5	
24	+	900253-04008	SCREW 4*8	1	4*8	
25		V265-000550	NUT,8	2		
26		C649-000420	HOOK	2		
27		X502-001020	LABEL,ECHO	1		
28		P021-023110	GEAR	1		
29		C328-000220	BAND,BRAKE	1		
30		C334-000180	CONNECTOR,BRAKE	1		
31		91381-04010	SCREW TAPPING	1		
32		93042-40100	PIN, SPRING	1		
33		C334-000190	CONNECTOR, BRAKE	1		
34		C334-000200	CONNECTOR,BRAKE	1		
35		900330-30120	PIN	2	3*12	
36		V452-000860	SPRING,TORSION	1		
37		C347-000010	PLATE,BRAKE SEAL	1		
38		V450-001160	SPRING,COIL	1		
39		C345-000430	COVER,BRAKE	1		
40		V202-000490	BOLT	3		
41		P021-026933	GUARD COMP	1		
42	+	900330-40080	PIN F 4*8	1	4*8	
43		V341-000000	WASHER,SQUARE	1		
44		V203-001470	BOLT,ADHESIVE	1		
45		V303-000320	WASHER,CIRCULAR 5	1		

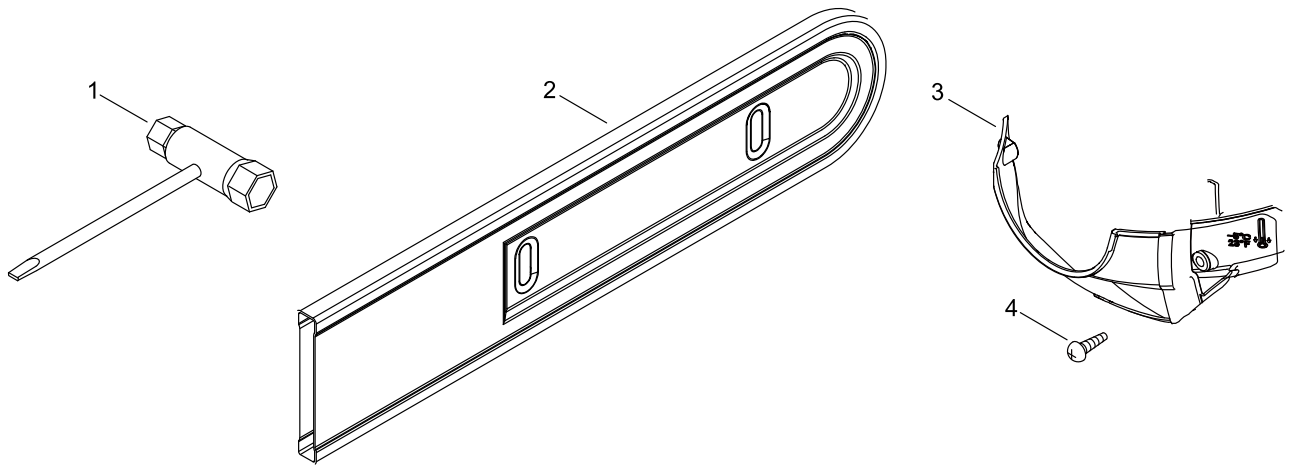
# CHAIN BRAKE



## CHAIN BRAKE

KEY NO	LV(+)	Part No	Description	Qty	Standard	Comment
46		J211-000430	BUSH	1		
47		V203-001410	BOLT ADHESIVE	1		

# ACCESSORIES

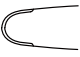



## ACCESSORIES

KEY NO	LV(+)	Part No	Description	Qty	Standard	Comment
1		X602-000150	PLUG WRENCH	1		
2		X490-000490	SCABBARD,CHAIN	1		
3		C418-000140	SHIELD, SNOW	1		
4		91374-04008	SCREW TAPPING	2		



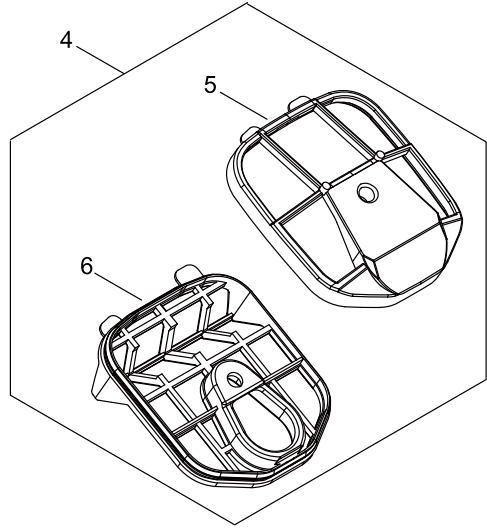
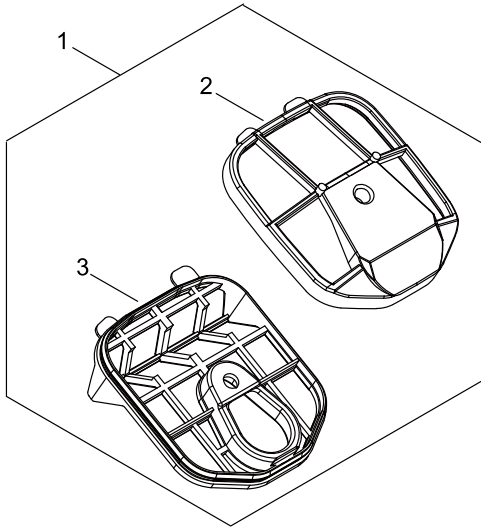
## GUIDE BAR, CHAIN

Pitch ピッチ	Gauge ゲージ	Length 長さ	Guide Bar ガイドバー		Saw Chain ソーチェーン		Hard Nose ハード ノーズ 	Sprocket Nose スプロケット ノーズ 
			Key	Type 形式	Key	Type 形式		
.325 8.26	0.058 1.47	40	A1	V40R21-68AA- ED	A2	21BPX-68E		●
.325 8.26	0.058 1.47	45	B1	V45R21-72AA- ED	B2	21BPX-72E		●
.325 8.26	0.058 1.47	50	C1	V50R21-80AA- ED	C2	21BPX-80E		●

## GUIDE BAR, CHAIN

KEY NO	LV(+)	Part No	Description	Qty	Standard	Comment
A1		X124-000691	BAR,GUIDE 40	1	V40R21-68AA-ED	
A2		431711-38331	CHAIN, SAW	1	21BPX-68E	
B1		X125-000351	BAR,GUIDE 45	1	V45R21-72AA-ED	
B2		431717-30231	CHAIN, SAW	1	21BPX-72E	
C1		X126-000291	BAR,GUIDE 50	1	V50R21-80AA-ED	
C2		431712-30231	CHAIN, SAW	1	21BPX-80E	

# OPTION PARTS



## OPTION PARTS

KEY NO	LV(+)	Part No	Description	Qty	Standard	Comment
1		A226-001090	AIR CLEANER ASSY	1		
2	+	A226-001100	AIR CLEANER UPPER	1		
3	+	A226-001110	AIR CLEANER LOWER	1		
4		A226-001040	AIR CLEANER ASSY	1	300	
5	+	A226-001010	AIR CLEANER UPPER	1		
6	+	A226-001020	AIR CLEANER LOWER	1		

# NUMERICAL PARTS INDEX

Part No	Part description	Page	Part No	Part description	Page	Part No	Part description	Page
123110-0-3930	SCREW, PUMP COVER	10	177236-0-6910	SCREW	14	93115-03-010	KEY	6
123112-1-5030	DIAPHRAGM, FUEL PUMP	10	431711-3-8331	CHAIN, SAW	24	A011-00-1420	CRANKSHAFT,ASY	2
123113-3-7530	SPRING, THROTTLE RTN	10	431712-3-0231	CHAIN, SAW	24	A014-00-0120	RELEASE ASY., COMP.	2
123114-3-8830	SCREW	10	431717-3-0231	CHAIN, SAW	24	A021-00-4410	CARBURETOR, DIAPHRAGM	8
123116-1-0530	VALVE, THROTTLE	10	437239-1-4730	NIPPLE	4	A021-00-4410	CARBURETOR, DIAPHRAGM	10
123122-0-3660	SPRING, METER. LEVER	10	890345-3-9231	LABEL,CAUTION	4	A033-00-0370	CAP ASSY	16
123123-0-3930	LEVER, METERING	10	900105-0-4006	BOLT, H.S. 4*6	12	A041-00-0000	STATOR,ASM	6
123125-1-5030	GASKET, FUEL PUMP	10	900105-0-5030	BOLT, H.S. 5*30	4	A051-00-3000	STARTER,RECOIL	14
123126-1-0631	SCREEN, INLET	10	900212-0-4008	SCREW 4*8	4	A056-00-0611	CLUTCH ASY	18
123127-1-5030	RING	10	900253-0-4008	SCREW 4*8	18	A101-00-0690	RING, PISTON	2
123130-0-2960	SCREW	10	900330-3-0120	PIN	18	A130-00-2280	CYLINDER	2
123133-0-4260	SPRING, IDLE ADJUST	10	900330-4-0080	PIN F 4*8	18	A172-00-1870	COVER,FAN	14
123136-0-9660	BALL	10	900600-0-0005	WASHER 5	4	A200-00-1050	INSULATOR,INTAKE	8
123137-1-9830	VALVE, INLET NEEDLE	10	900600-0-0005	WASHER 5	8	A202-00-0150	BOOT	8
123138-0-3930	PIN, METERING LEVER	10	900603-0-0004	WASHER 4	4	A204-00-0220	ELBOW, CARBURETOR	8
123139-0-3930	SCREW, M. LEVER PIN	10	900720-2-0007	O-RING 7	6	A206-00-0030	HOLDER, BELLOWS	8
123140-0-3930	GASKET, M. DIAPHRAGM	10	91100-05-048	BOLT	8	A219-00-0040	SHUTTER,AIR	4
123142-0-3930	COVER, M. DIAPHRAGM	10	91374-04-008	SCREW TAPPING	22	A226-00-1010	AIR CLEANER UPPER	26
123146-1-0631	PLUG, WELCH	10	91381-04-010	SCREW TAPPING	18	A226-00-1020	AIR CLEANER LOWER	26
123149-2-6030	WASHER	10	91449-04-022	SCREW TAPPING	16	A226-00-1040	AIR CLEANER ASSY	26
123185-0-9660	PISTON ASSY	10	91578-04-006	SCREW	12	A226-00-1090	AIR CLEANER ASSY	26
123186-0-9660	SPRING, START VALVE	10	93042-40-100	PIN, SPRING	18	A226-00-1100	AIR CLEANER UPPER	26
131300-5-6431	VENT ASSEMBLY, FUEL	16	93042-40-220	PIN, SPRING	16	A226-00-1110	AIR CLEANER LOWER	26
175114-1-2530	SPROCKET, RIM .325	18	93060-40-250	PIN, SPRING	16	A226-00-1580	ELEMENT,AIR FILTER	8

# NUMERICAL PARTS INDEX

Part No	Part description	Page	Part No	Part description	Page	Part No	Part description	Page
A226-00-1590	ELEMENT,AIR FILTER	8	C209-00-0070	STRAINER,OIL	4	C649-00-0420	HOOK	18
A226-00-1600	ELEMENT,AIR FILTER	8	C236-00-0060	COVER,OILER	4	J211-00-0430	BUSH	20
A235-00-0270	KNOB,CLEANER LID	8	C300-00-1040	GUARD, SPROCKET	18	P003-00-1510	LEVER-FAST IDLE	10
A240-00-0111	ROD, CHOKE	8	C302-00-0030	PROTECTOR	18	P003-00-1850	DIAPHRAGM, METERING	10
A301-00-0060	PLATE, MUFFLER	12	C304-00-0310	SPIKED	18	P003-00-2260	SPRING	10
A310-00-0450	SCREEN, ARRESTOR	12	C305-00-0411	PLATE,SPROCKET GUARD	18	P003-00-2380	SCREW	10
A313-00-1481	GUIDE, EXHAUST	12	C305-00-0470	PLATE,SPROCKET GUARD	18	P003-00-3180	THROTTLE LEVER	10
A313-00-2010	GUIDE, EXHAUST	12	C309-00-0190	TENSIONER, CHAIN	18	P003-00-3190	SHAFT	10
A356-00-0130	VALVE,CHECK	4	C310-00-0110	CATCHER, CHAIN	4	P003-00-3650	IDEL SCREW	10
A369-00-0450	STRAINER, FUEL	16	C328-00-0220	BAND,BRAKE	18	P003-00-4460	NEEDLE	10
A409-00-1081	ROTOR, MAGNETO	6	C334-00-0180	CONNECTOR, BRAKE	18	P003-00-5590	VALVE, CHOKE	10
A425-00-0000	SPARKPLUG	6	C334-00-0190	CONNECTOR, BRAKE	18	P003-00-5600	PUMP COVER ASY	10
A426-00-0040	TERMINAL, SPARKPLUG	6	C334-00-0200	CONNECTOR, BRAKE	18	P003-00-5620	SHAFT ASSY	10
A427-00-0160	PLUG CAP	6	C345-00-0430	COVER,BRAKE	18	P021-02-3110	GEAR	18
A440-00-1630	SWITCH	4	C347-00-0010	PLATE,BRAKE SEAL	18	P021-02-6933	GUARD COMP	18
A504-00-0190	RECOIL SPRING ASSY	14	C401-00-0260	COVER	16	P021-03-7400	SWITCH, ON OFF	4
A510-00-0130	GUIDE,ROPE	14	C403-00-0530	GRIP	16	P021-03-7541	COIL, IGNITION	6
A514-00-0220	PAWL	6	C406-00-0020	HEATER,HANDLE	16	P021-04-8650	PISTON KIT	2
A552-00-0231	HUB, CLUTCH	18	C411-00-0170	LID,HANDLE	16	P021-04-8660	MUFFLER ASY	12
A552-00-0241	HUB, CLUTCH	18	C418-00-0140	SHIELD, SNOW	22	P021-04-9100	GUARD, SPROCKET ASY	18
A556-00-1121	DRUM, CLUTCH	18	C450-00-0642	CONTROL, THROTTLE	16	P021-05-1950	CRANK CASE SET	4
C020-00-0040	CAP	4	C454-00-0280	ROD,THROTTLE	8	P022-02-3100	ROPE, STARTER	14
C022-00-0121	AUTO-OILER ASSEMBLY	4	C460-00-0390	LOCKOUT, THROTTLE	16	P022-03-6780	GRIP, STARTER	14
C040-00-0840	HANDLE, FRONT	16	C483-00-0040	BOOT, CONNECTOR	16	P022-03-9770	CASE, STARTER	14

# NUMERICAL PARTS INDEX

Part No	Part description	Page	Part No	Part description	Page	Part No	Part description	Page
P022-03-9780	DRUM, STARTER	14	V203-00-0021	BOLT,5	18	V355-00-0840	COLLAR,8	18
P022-03-9790	SPRING CASE	14	V203-00-1320	BOLT ADHESIVE	2	V359-00-0200	COLLAR	8
P100-00-0270	CLUTCH SHOE SET	18	V203-00-1410	BOLT ADHESIVE	20	V401-00-0330	CUSHION	16
P100-00-0670	LID,CLEANER ASY	8	V203-00-1450	BOLT	4	V401-00-0610	CUSHION,5	16
P100-00-0740	CYLINDER COVER ASY	4	V203-00-1470	BOLT,ADHESIVE	18	V420-00-2780	CUSHION	4
P100-00-0750	HANDLE ASY, REAR	16	V203-00-1490	BOLT TAPPING	16	V420-00-2790	CUSHION	16
V100-00-0620	GASKET,CYL	2	V203-00-1540	BOLT,ADHESIVE	4	V420-00-4980	CUSHION	4
V102-00-0220	GASKET, CRANKCASE	4	V203-00-1950	BOLT,5	16	V421-00-0070	CAP,CUSHION	16
V104-00-1780	GASKET,EXHAUST	12	V203-00-2010	BOLT,5	18	V450-00-1160	SPRING,COIL	18
V107-00-0070	GASKET	16	V203-00-2200	BOLT,5	12	V451-00-0930	SPRING	18
V107-00-0090	GASKET	4	V204-00-0620	BOLT	6	V452-00-0850	SPRING,TORSION	16
V130-00-0131	GROMMET,CHOKE	8	V225-00-0150	BOLT,STUD	4	V452-00-0860	SPRING,TORSION	18
V131-00-0190	GROMMET,NEEDLE	14	V252-00-0470	SCREW,4	18	V452-00-0870	SPRING,TORSION	6
V133-00-0040	GROMMET	4	V265-00-0211	NUT,8	18	V470-00-1520	PIPE	16
V133-00-0040	GROMMET	8	V265-00-0220	NUT	6	V470-00-1530	PIPE	16
V141-00-0090	GROMMET,PLUG	2	V265-00-0550	NUT,8	18	V470-00-1840	PIPE	4
V202-00-0200	BOLT	8	V266-00-0090	NUT,10	4	V471-00-2800	PIPE	8
V202-00-0200	BOLT	14	V303-00-0320	WASHER,CIRCULAR 5	18	V475-00-5180	TUBE	6
V202-00-0350	BOLT-SPW	16	V304-00-0270	WASHER,CIRCULAR 6	6	V490-00-0500	CLIP	16
V202-00-0490	BOLT	18	V307-00-0451	WASHER,CIRCULAR 10	18	V490-00-1230	CLIP	4
V202-00-0520	BOLT,4	4	V308-00-0040	WASHER,CIRCULAR 11	2	V495-00-1580	BAND	16
V202-00-0530	BOLT,4	6	V341-00-0000	WASHER,SQUARE	18	V505-00-0070	OIL SEAL	4
V202-00-0540	BOLT,4	6	V353-00-0460	BUSH	4	V508-00-0070	OIL SEAL	4
V202-00-0690	BOLT,4	4	V355-00-0460	COLLAR,8	4	V555-00-0150	BEARING,NEEDLE	18

## NUMERICAL PARTS INDEX

Part No	Part description	Page
V556-00-0040	BEARING,NEEDLE 11	2
V580-00-0030	RING,END	2
V581-00-0280	GASKET	8
V592-00-0290	BEARING, BALL	4
V592-00-0330	BEARING, BALL	4
V609-00-0070	PIN,ENG 11	2
V629-00-0000	ROLLER	4
V651-00-0011	GEAR,BEVEL	18
V651-00-1060	GEAR,BEVEL	18
X124-00-0691	BAR,GUIDE 40	24
X125-00-0351	BAR,GUIDE 45	24
X126-00-0291	BAR,GUIDE 50	24
X490-00-0490	SCABBARD,CHAIN	22
X502-00-0900	LABEL,ECHO	14
X502-00-1020	LABEL,ECHO	18
X503014150	LABEL,MODEL	8
X602-00-0150	PLUG WRENCH	22